



→ WHAT CAN SENTINELS DO FOR REGIONS?

A discussion about the use of Copernicus satellite data within Local and Regional Authorities in Europe

WALLONIA

By Nathalie STEPHENNE,

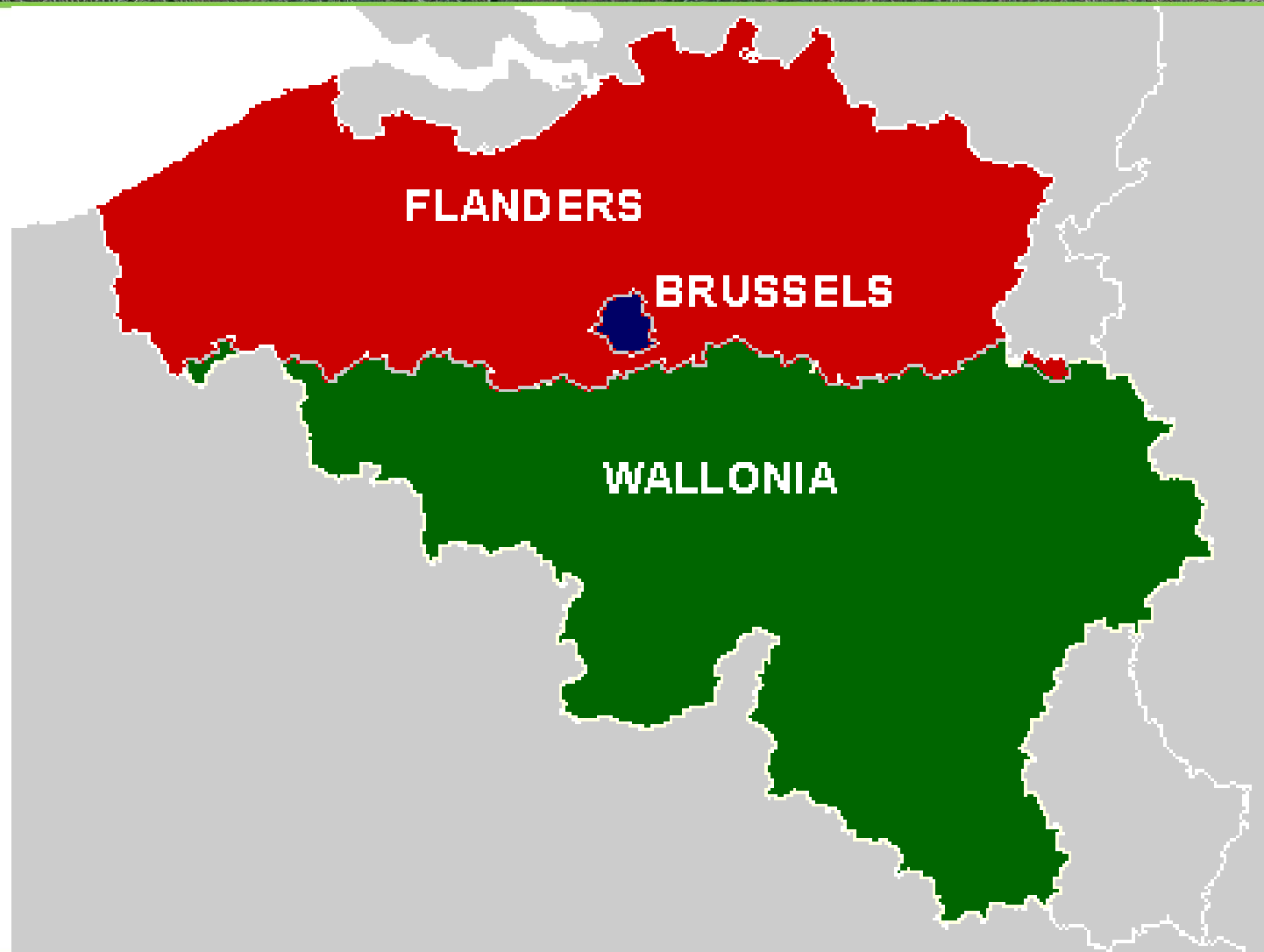
Institut Scientifique du Service Public (ISSeP)

In collaboration with

Jean-Claude Jasselette (SPW-SG-DGM), Boris Delfosse (SPW-DGO3-DNF),
Christian Barbier (CSL), Philippe Ledent (Spacebel), Michel Stassart (Skywin)



WALLONIA | Map



WALLONIA | Territorial challenges

LA MALOGNE, CUESME (22/04/2015)



LA PETITE BACNURE, LIEGE (01/04/1999)



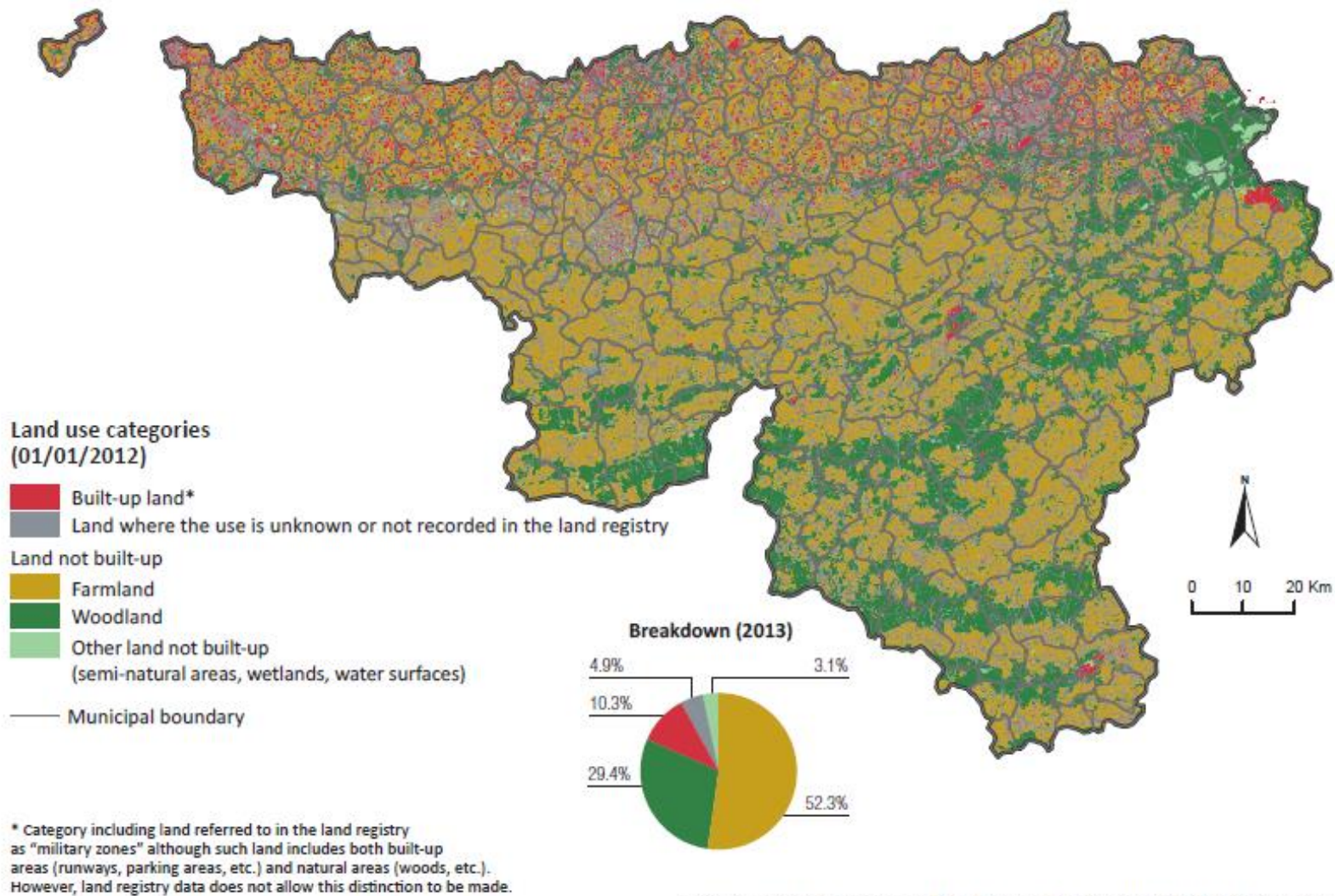
LA PETITE BACNURE, LIEGE (2015)



SAINT VAAST, MONS BASIN (2009)

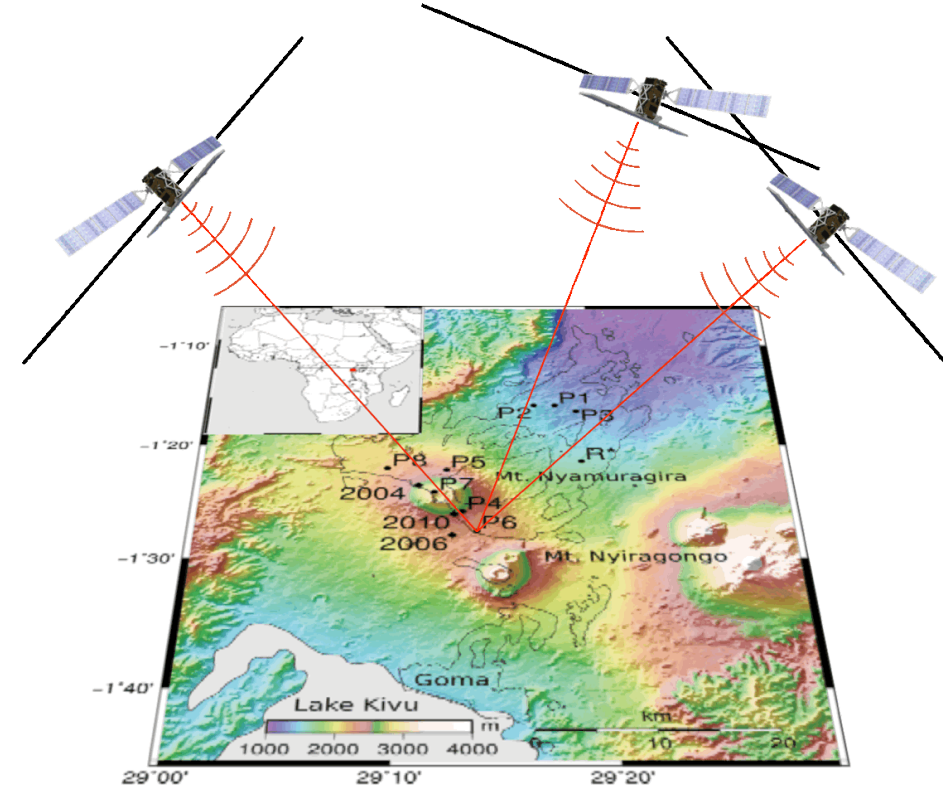
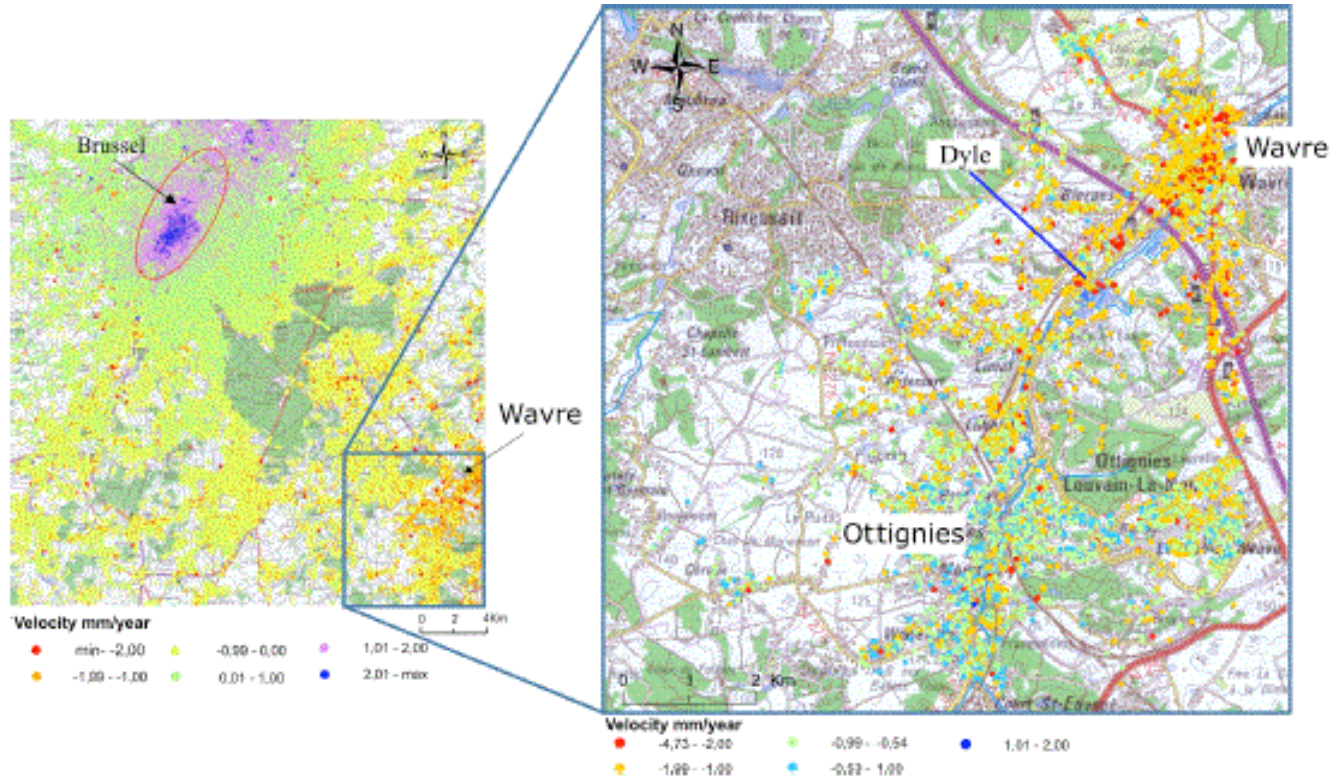


WALLONIA | Territorial challenges

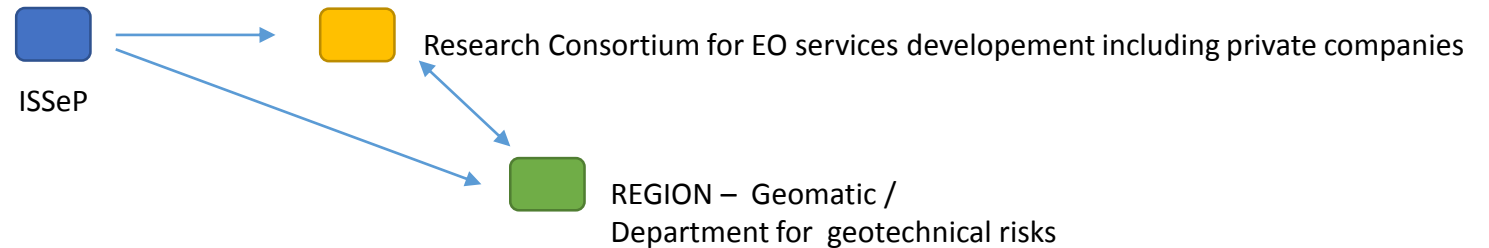


EOW 2014 – Sources: SPF Finances - AGDP - CadMap and land registry as of 01/01/2012 / IWEPS calculations (2013)

WALLONIA | Potential experience with Copernicus



Declercq et al. 2005



– DOCUMENTATION –
SWOT ANALYSIS and COST / BENEFIT ANALYSIS
REGIONAL SURVEYS

– PLATFORMS FOR EXCHANGE –
THEMATIC WORKING GROUPS
IN REGIONAL ADMINISTRATIONS
LAW RECOMMENDATIONS