



AUTORITÀ PORTUALE
DI VENEZIA



REGIONE DEL VENETO



PORTO DI VENEZIA
DOVE LA TERRA GIRA INTORNO AL MARE

“EGNOS AND GALILEO FOR MARINE AND MARITIME APPLICATIONS: OPPORTUNITIES AND CHALLENGES FOR EUROPEAN REGIONS”

16th – 17th April 2012 - Veneto Region, Venice - Italy



**LogIS – Logistics Information System
The Port Community System of Venice**

LogIS: the Port Community System of Venice

LogIS is the Port Community System of Venice.

The system is a web-based platform which consists of a series of application modules dedicated to the management of document workflow related to the port processes.

The actors are all operators/stakeholders who, within the Port Community, play a role in the maritime-port-logistics and transport cluster (Harbour Master, Port Authority, Shipping Agents, Pilots, Port Facilities, etc.).

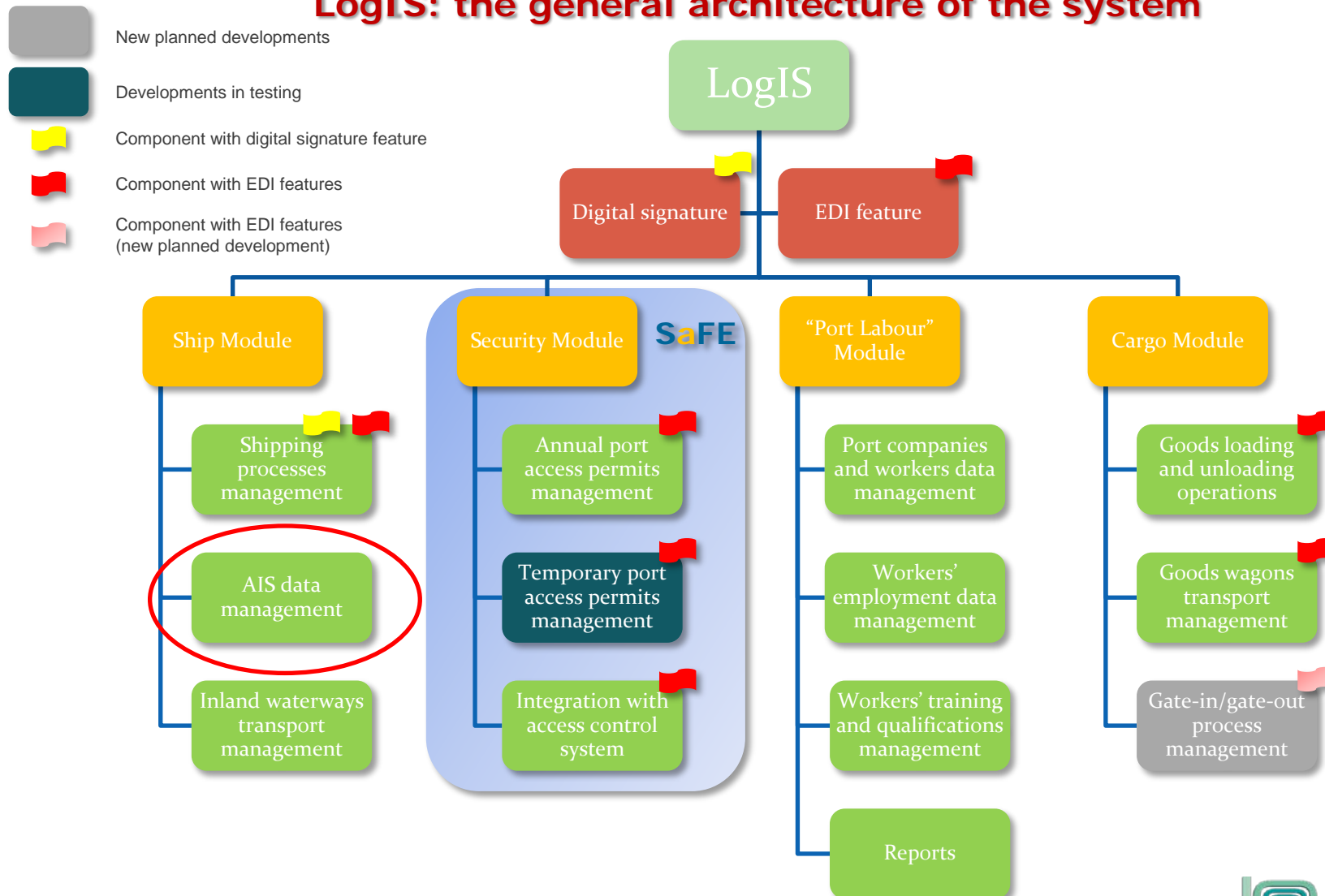
The system consists of the following main components:

1. **"Ship Module"**: it is dedicated to the management of the "ship formalities" related to the authorization processes which take place from the entry of a ship into the port until its exit; it has as main actors the Shipping Agents and the Harbour Master; **this module can also display and process the AIS data of the ships**;
2. **"Cargo Module"**: it provides details about goods loading and unloading at the port terminals and it deals with the activities related to the traffic management of the goods wagons; in addition, the development of a component dedicated to the management of goods gate-in/gate-out processes is planned;
3. **"Security Module"**: it provides tools to manage the requests for access permits into the port and it is integrated with the access control component of the SaFE (Security and Facility Expertise) system, dedicated to video surveillance and access control;
4. **"Port Labour Module"**: it deals with the management of information about companies which operate within the port, about the workers and their training, qualifications, injuries, roles within the company, etc..

All system components are integrated into a single platform, both in terms of application and database: in this way LogIS fulfills the logic of **"single window system"**.

LogIS is also open to the dialogue with third-party applications through a component specifically dedicated to EDI (Electronic Data Interchange).

LogIS: the general architecture of the system



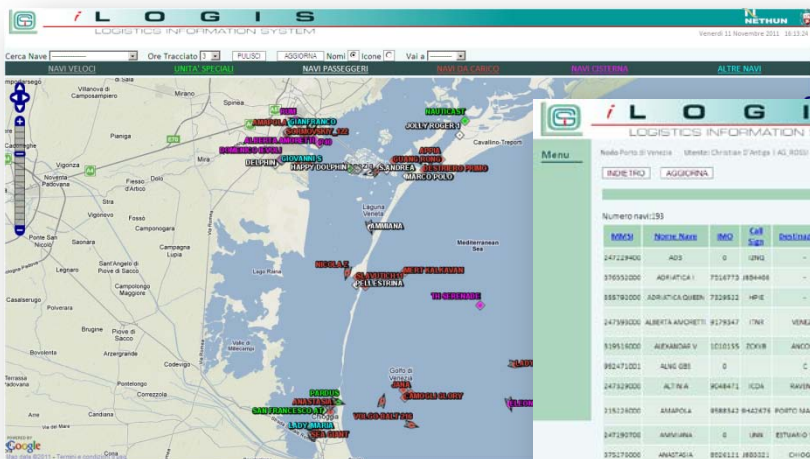


The AIS feature of LogIS

LogIS is interfaced with the Automatic Identification System. An AIS receiver was installed in order to receive the data and elaborate them in LogIS for purposes strictly related to the activities of Venice Port Authority and under the authorization of the competent Maritime Authority, the Harbour Master.

LogIS receives data from AIS and elaborates and displays them through a dedicated software component; the AIS receiver was connected with a server dedicated to the elaboration and storage of AIS data; LogIS accesses this server in order to get the AIS data, display them on maps and tables and elaborate them to obtain the following information:

- comparison between data from AIS and data from LogIS documents (ETA, ETD, ship name, etc.),
- historical data, on the basis of ship name, ship type, zone and time interval,
- ship routes, on the basis of ship name, ship type, zone and time interval,
- current and past situation of ships in port (time evolution of ships' position in port and in the roadstead).

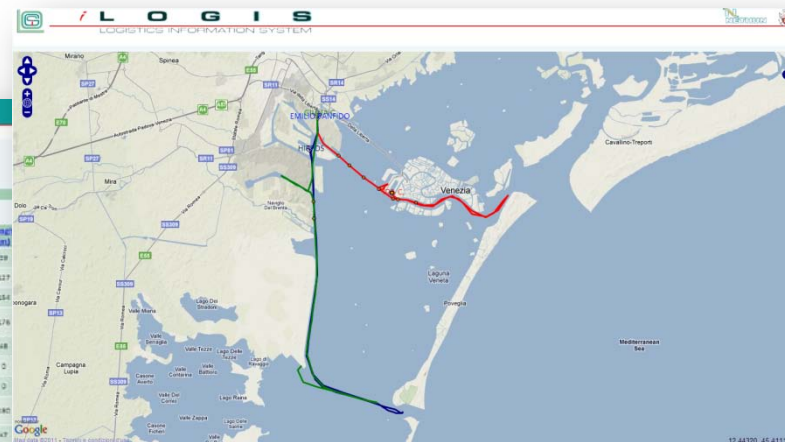


LOGIS
LOGISTICS INFORMATION SYSTEM

Menu

Numero Navi: 293

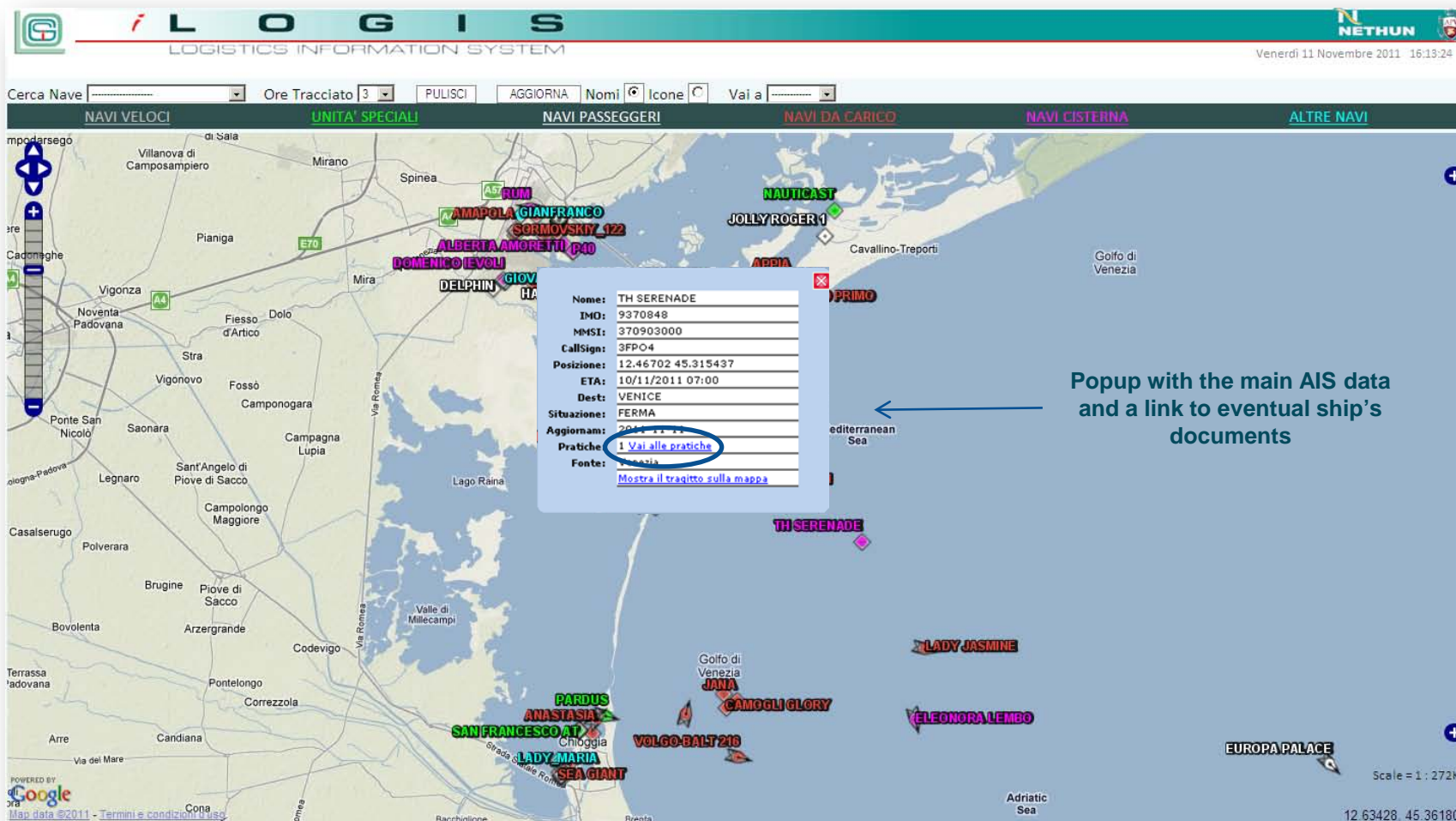
IMMCH	Nome_Nave	IMO	Call Sign	Destinazione	Tip_Nave	Velocità	Zone	Situazione	Stato	Tempo
247229400	AOS	0	UN22	-	Altro nave	0	-	-	0.0	39
376530200	ADRIATICA	7316773	889448	-	Navi passeggeri	0	-	-	0.0	127
355781000	ADRIATICA	7316773	889448	-	Navi passeggeri	0	-	-	0.0	154
247393000	ALBERTA AVOCCHETTI	9178347	1781	VENEZIA	Navi cargo	0	-	-	0.0	176
319518000	ALEXANDRA V	1010155	70018	ANCONA	Altro nave	0	-	-	0.1	48
982471001	ALING BEE	0	C	-	Altro nave	0	-	-	0.0	0
247323000	ALTRINA	8048471	1024	RAVENNA	Navi da carico	0	-	-	0.0	0
318218000	ASAPOLA	9888342	8442476	PORTO MAIORE	Navi da carico	0	-	-	0.0	180
247393000	AVANTURA	0	UN22	ESTUARIO VENETO	Navi passeggeri	0	-	-	7.2	17
375717000	AVANTURA	8502111	180322	CHIOGGIA	Navi da carico	7.3	84	16	0.3	16
247058600	ANGELINA C.	8240081	177C	VENEZIA	Unità speciali	0	-	-	0.0	32
247180000	ANGELO B.	8115879	110E	-	Navi da carico	0	-	-	0.0	75
247187500	APPIA	8958053	1001	-	Navi da carico	0	-	-	0.0	40





The AIS feature of LogIS

The map representation of ships' position





AUTORITÀ PORTUALE
DI VENEZIA

nereus

network of european regions
using space technologies

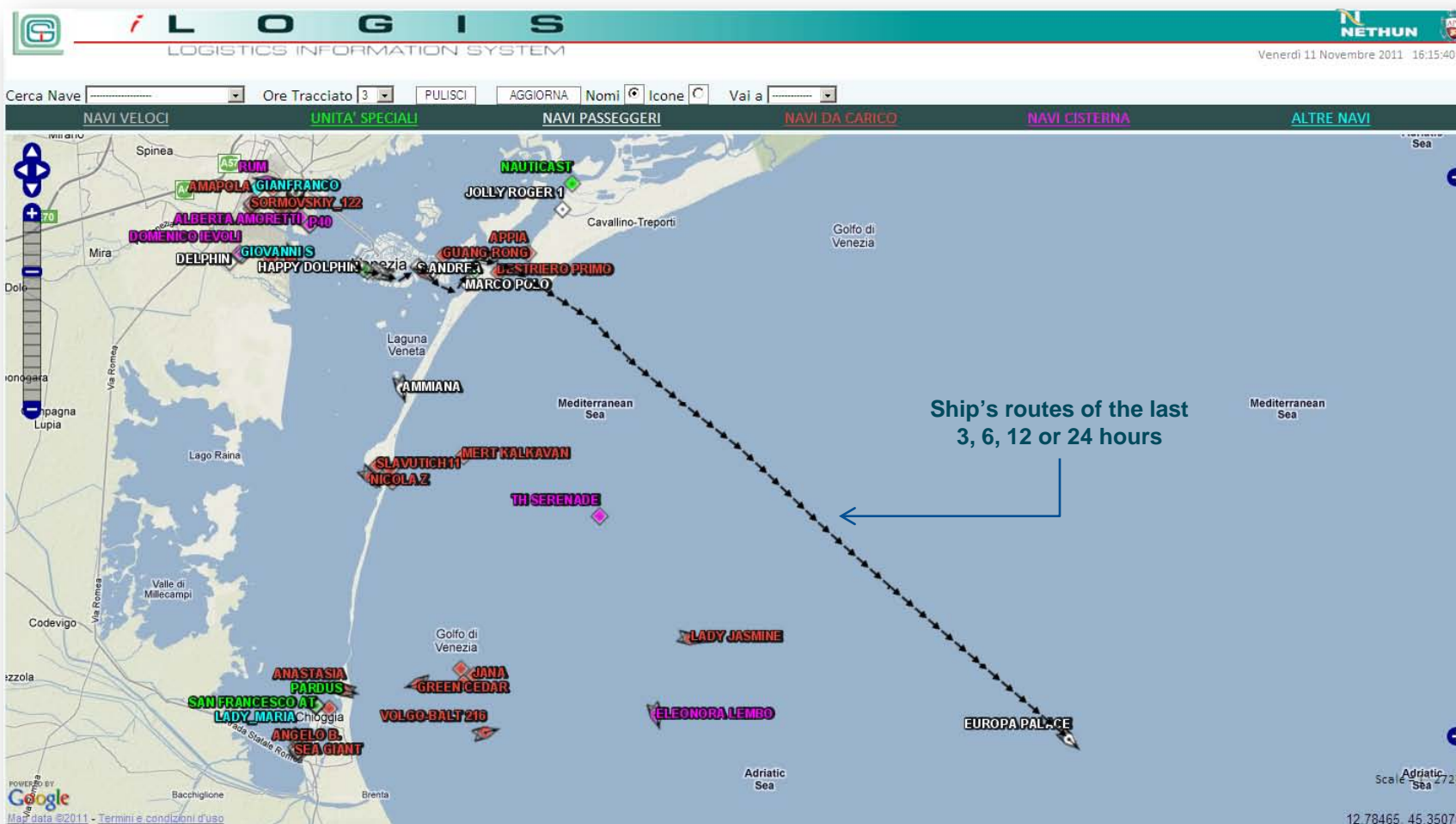


REGIONE DEL VENETO



PORTO DI VENEZIA
DOVE LA TERRA GIRA INTORNO AL MARE

The AIS feature of LogIS The ship's route





AUTORITÀ PORTUALE
DI VENEZIA

nereus

network of european regions
using space technologies



REGIONE DEL VENETO



PORTO DI VENEZIA
DOVE LA TERRA GIRA INTORNO AL MARE

The AIS feature of LogIS The real time and historical data

LOGIS
LOGISTICS INFORMATION SYSTEM

Menu

Nodo Porto di Venezia Utente: Christian D'Antiga | AG_BOSS

DETTAGLIO DATI AIS

Numero navi: 193

Ultimo Aggiornamento: da 15 minuti, da 45 minuti, oltre 45 minuti.

MMSI	Nome Nave	IMO	Call Sign	Destinazione*	Tipo Nave	Vedi	Zona**	Situazione**	Sog (nodi)	Longh (m)	Largh (m)	Pescaggio (m)	Stato Nave	Latitudine	Longitudine	Aggiornamento
247229400	AD8	0	IZNQ	-	Altre navi		-	-	0.0	59	20	0.0	Ormeggiata	43.618073	13.502988	11-11-2011 16:21:06
376551000	ADRIATICA I	7516773	J884486	-	Navi passeggeri		-	-	0.0	127	19	0.0	Navig. motore	41.148457	16.858432	11-11-2011 16:27:54
355792100	ADRIATICA QUEEN	7329522	HPJE	-	Navi passeggeri		-	-	0.0	154	22	0.0	Navig. motore	41.153855	16.864667	11-11-2011 16:27:58
247585000	ALBERTA AMORETTI	9179347	ITNR	VENEZIA	Navi clistera		CANALE VITTORIO EMANUELE III	FERMA	0.0	176	29	7.8	Ormeggiata	45.456482	12.265819	11-11-2011 16:28:47
819918000	ALEXANDAR V	1010155	ZCKVR	ANCONA	Altre navi		-	-	0.1	68	9	2.8	Navig. motore	48.8135	18.492333	11-11-2011 16:27:01
992471001	ALING 685	0		C	Altre navi		-	-	0.0	0	0	15.5	Non definito	45.091028	12.585477	11-11-2011 16:27:59
247329000	ALFINIA	9048471	ICDA	RAVENNA	Navi da carico		-	-	0.0	0	0	4.6	Ormeggiata	44.45745	12.259167	11-11-2011 16:26:19
215328000	AMAPOLA	9588342	9HA2876	PORTO MARGHERA	Navi da carico		CANALE INDUSTRIALE OVEST	FERMA	0.0	180	32	7.9	Ormeggiata	45.483135	12.233242	11-11-2011 16:24:27
247290700	AMMIANA	0	UNN	ESTUARIO VENETO	Navi passeggeri		-	-	7.2	47	24	2.2	Non governa	45.346432	12.310968	11-11-2011 16:30:07
875278000	ANASTASIA	8928121	J883321	CHIOGGIA	Navi da carico		FUORI RADA SUD	IN ENTRATA	7.7	84	16	3.5	Navig. motore	45.225517	12.335157	11-11-2011 16:27:55
247056600	ANGELINA C.	9240081	ITYC	VENEZIA	Unita' speciali		CANALE INDUSTRIALE BRENTELLA	FERMA	0.0	32	11	5.2	Ormeggiata	45.467098	12.261827	11-11-2011 16:29:26
247490000	ANGELO B.	8515675	INUE	-	Navi da carico		-	-	0.0	75	14	0.0	Navig. motore	45.2108	12.270415	11-11-2011 16:29:22
247297300	APPIA	8959051	IODI	-	Navi da carico		CANALE DI TREPONTI	FERMA	0.0	40	15	1.9	Navig. motore	45.439541	12.419	11-11-2011 16:29:07

← Real time data

Historical data



STORICO DATI AIS

Venerdì 11 Novembre 2011 16:38:16

zona

Ultimo Aggiornamento: da 15 minuti, da 45 minuti, oltre 45

MMSI	Nome Nave	IMO	Call Sign	ETA*	Latitudine	Longitudine	Destinazione*	Tipo Nave	Situazione**	Zona**	Sog (nodi)	Co*	Longhezza (m)	Larghezza (m)	Pescaggio (m)	Stato Nave	Latitudine	Longitudine	Aggiornamento
247056600	ANGELINA C.	9240081	ITYC	21/04/2011 15:00	45.467541	12.261818	VENEZIA	Unita' speciali	FERMA	CANALE INDUSTRIALE BRENTELLA	0.0	0	32	11	5.2	Ormeggiata	45.467541	12.261818	11-11-2011 00:16:10
247056600	ANGELINA C.	9240081	ITYC	21/04/2011 15:00	45.467541	12.261818	VENEZIA	Unita' speciali	FERMA	CANALE INDUSTRIALE BRENTELLA	0.0	0	32	11	5.2	Ormeggiata	45.467541	12.261818	11-11-2011 00:19:32
247056600	ANGELINA C.	9240081	ITYC	21/04/2011 15:00	45.467541	12.261818	VENEZIA	Unita' speciali	FERMA	CANALE INDUSTRIALE BRENTELLA	0.0	0	32	11	5.2	Ormeggiata	45.467541	12.261818	11-11-2011 00:19:26
247056600	ANGELINA C.	9240081	ITYC	21/04/2011 15:00	45.467541	12.261818	VENEZIA	Unita' speciali	FERMA	CANALE INDUSTRIALE BRENTELLA	0.0	0	32	11	5.2	Ormeggiata	45.467541	12.261818	11-11-2011 00:31:09
247056600	ANGELINA C.	9240081	ITYC	21/04/2011 15:00	45.467541	12.261818	VENEZIA	Unita' speciali	FERMA	CANALE INDUSTRIALE BRENTELLA	0.0	0	32	11	5.2	Ormeggiata	45.467541	12.261818	11-11-2011 00:34:10
247056600	ANGELINA C.	9240081	ITYC	21/04/2011 15:00	45.467541	12.261818	VENEZIA	Unita' speciali	FERMA	CANALE INDUSTRIALE BRENTELLA	0.0	0	32	11	5.2	Ormeggiata	45.467541	12.261818	11-11-2011 00:37:09
247056600	ANGELINA C.	9240081	ITYC	21/04/2011 15:00	45.467541	12.261818	VENEZIA	Unita' speciali	FERMA	CANALE INDUSTRIALE BRENTELLA	0.0	0	32	11	5.2	Ormeggiata	45.467541	12.261818	11-11-2011 00:40:14





AUTORITÀ PORTUALE
DI VENEZIA



nereus

network of european regions
using space technologies

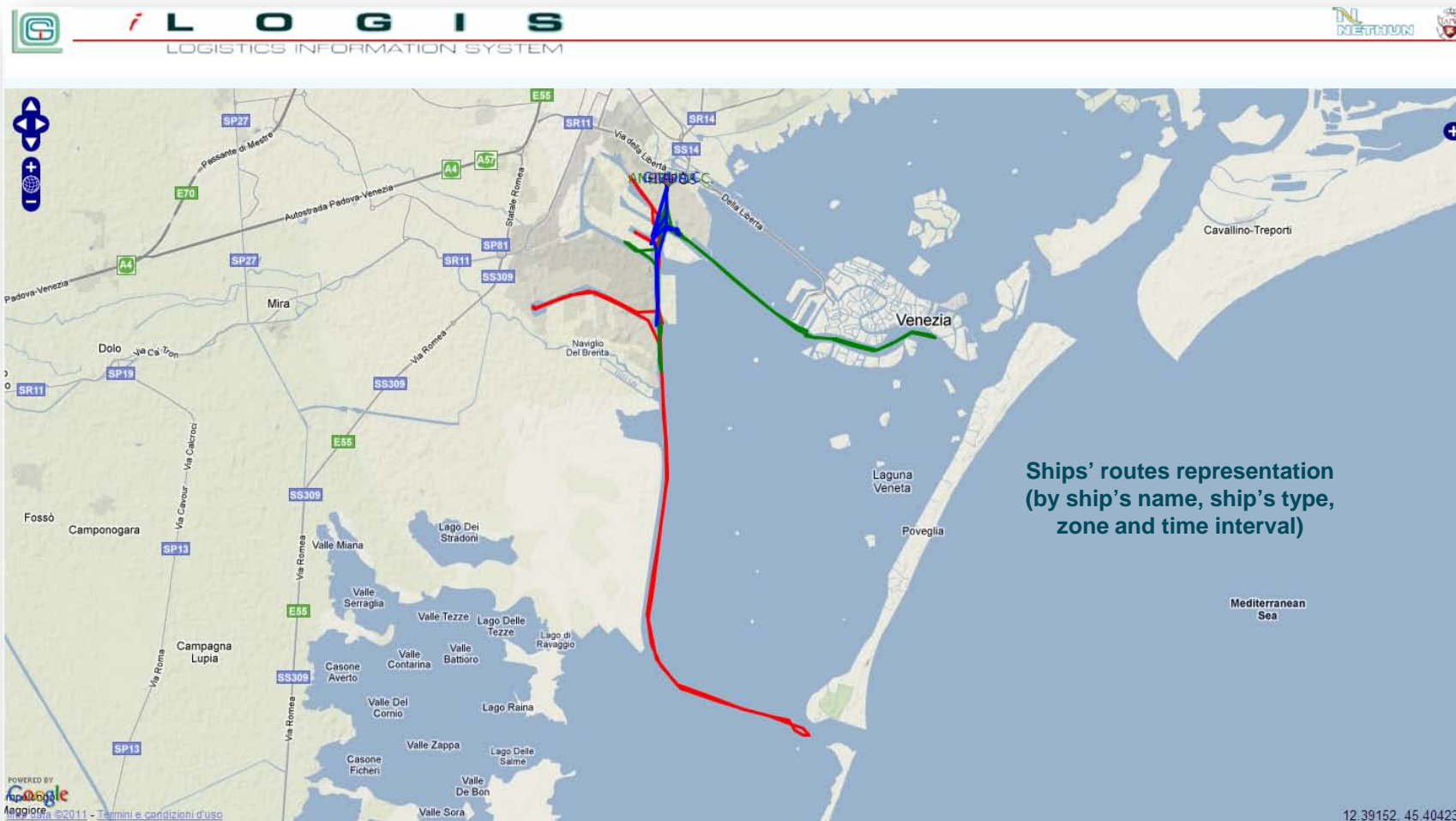


REGIONE DEL VENETO



PORTO DI VENEZIA
DOVE LA TERRA GIRA INTORNO AL MARE

The AIS feature of LogIS The ships' routes





AUTORITÀ PORTUALE
DI VENEZIA

nereus

network of european regions
using space technologies



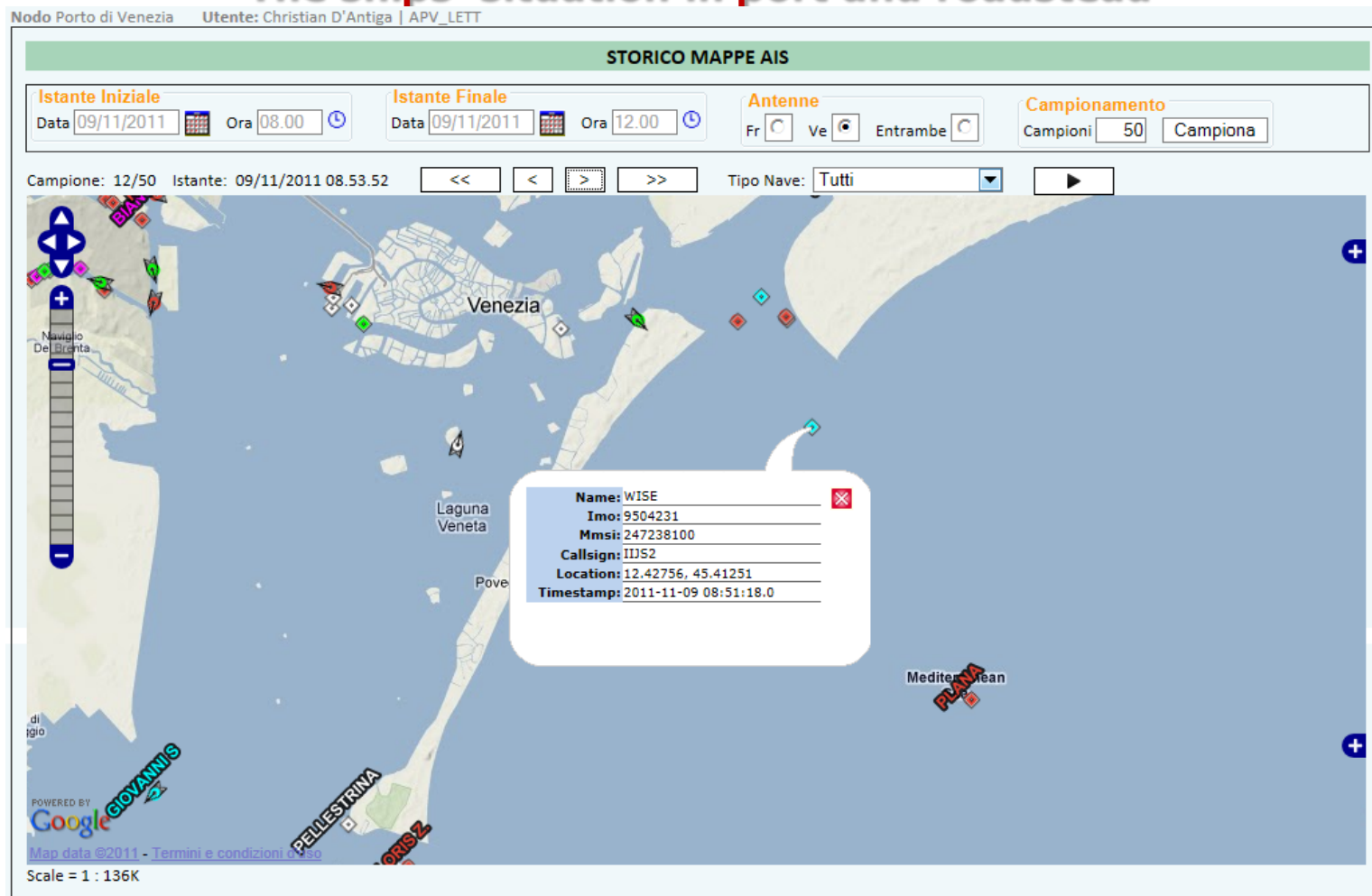
REGIONE DEL VENETO



PORTO DI VENEZIA
DOVE LA TERRA GIRA INTORNO AL MARE

The AIS feature of LogIS

The ships' situation in port and roadstead





AUTORITÀ PORTUALE
DI VENEZIA

nereus

network of european regions
using space technologies



REGIONE DEL VENETO

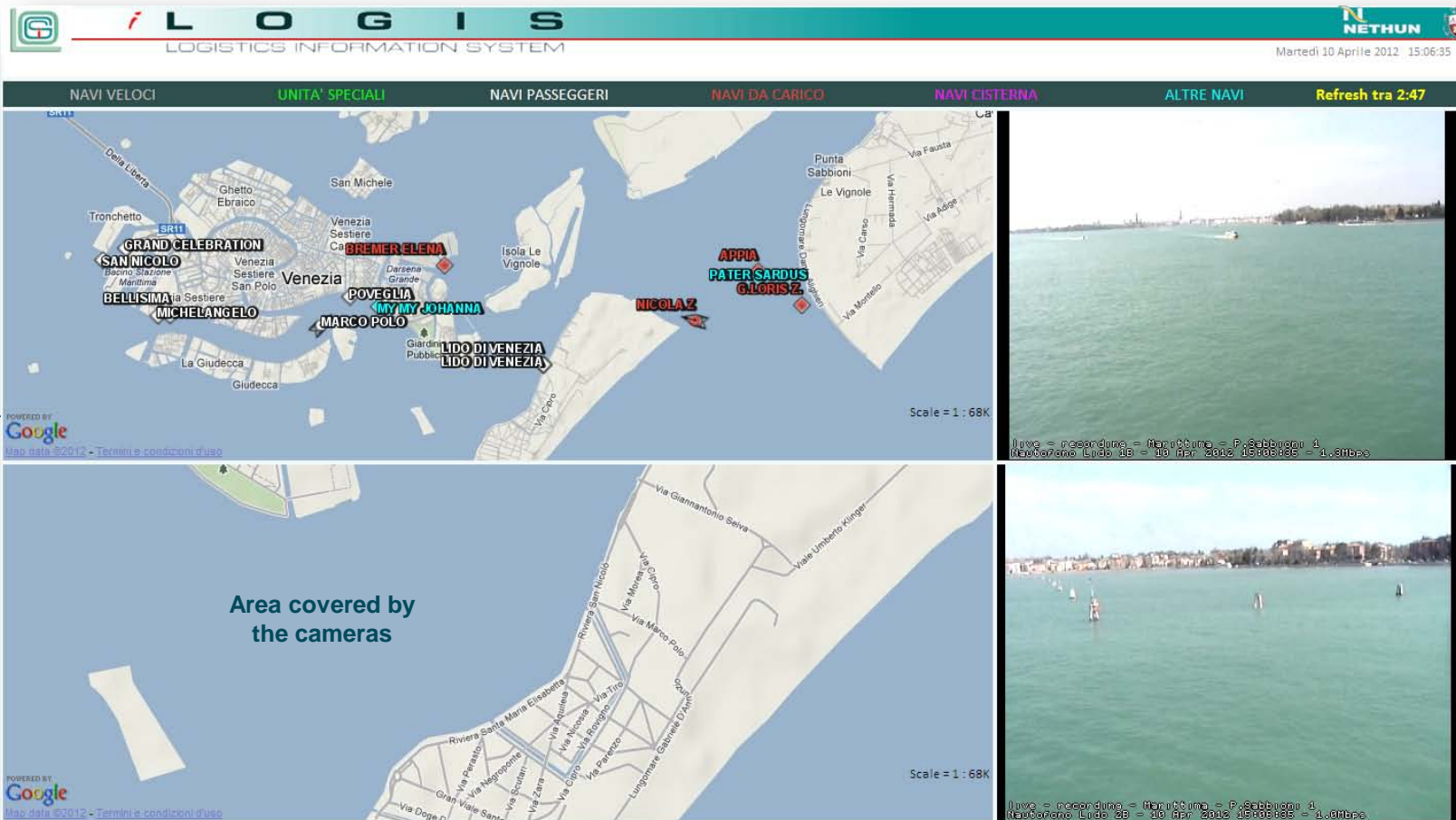


PORTO DI VENEZIA
DOVE LA TERRA GIRA INTORNO AL MARE

The AIS feature of LogIS AIS data and video surveillance

AIS maps

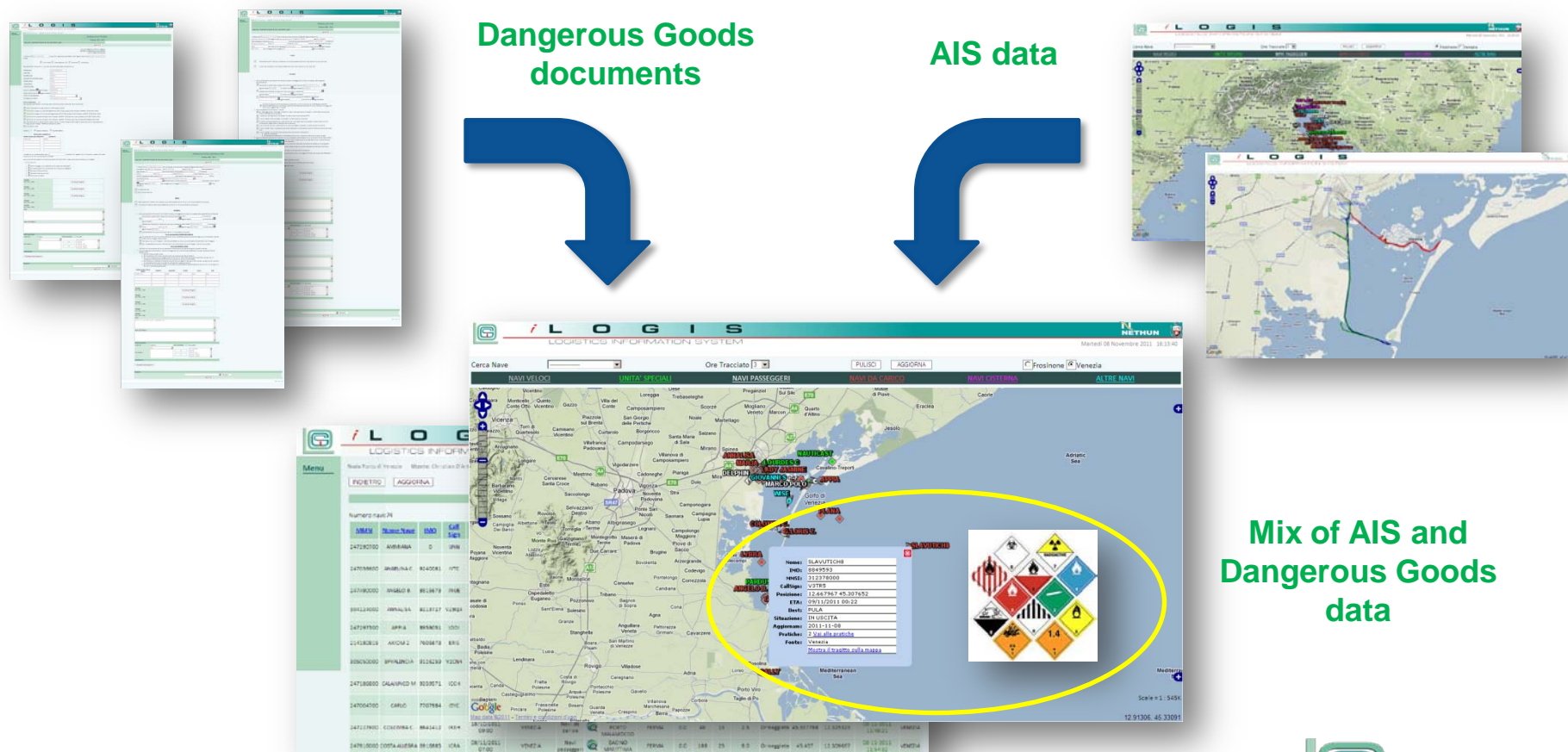
Cameras in real time



The AIS feature of LogIS

The new planned developments

Through a mix of data from AIS and data from the documents created by Shipping Agents and approved by Harbour Master during the completion of the formalities, it will be possible to improve the monitoring system of LogIS on dangerous goods, providing more information directly on map and/or in tables.





AUTORITÀ PORTUALE
DI VENEZIA



REGIONE DEL VENETO



THANKS FOR YOUR ATTENTION

Ing. Christian D'Antiga

phone: 041 533 4779

e-mail: christian.dantiga@port.venice.it