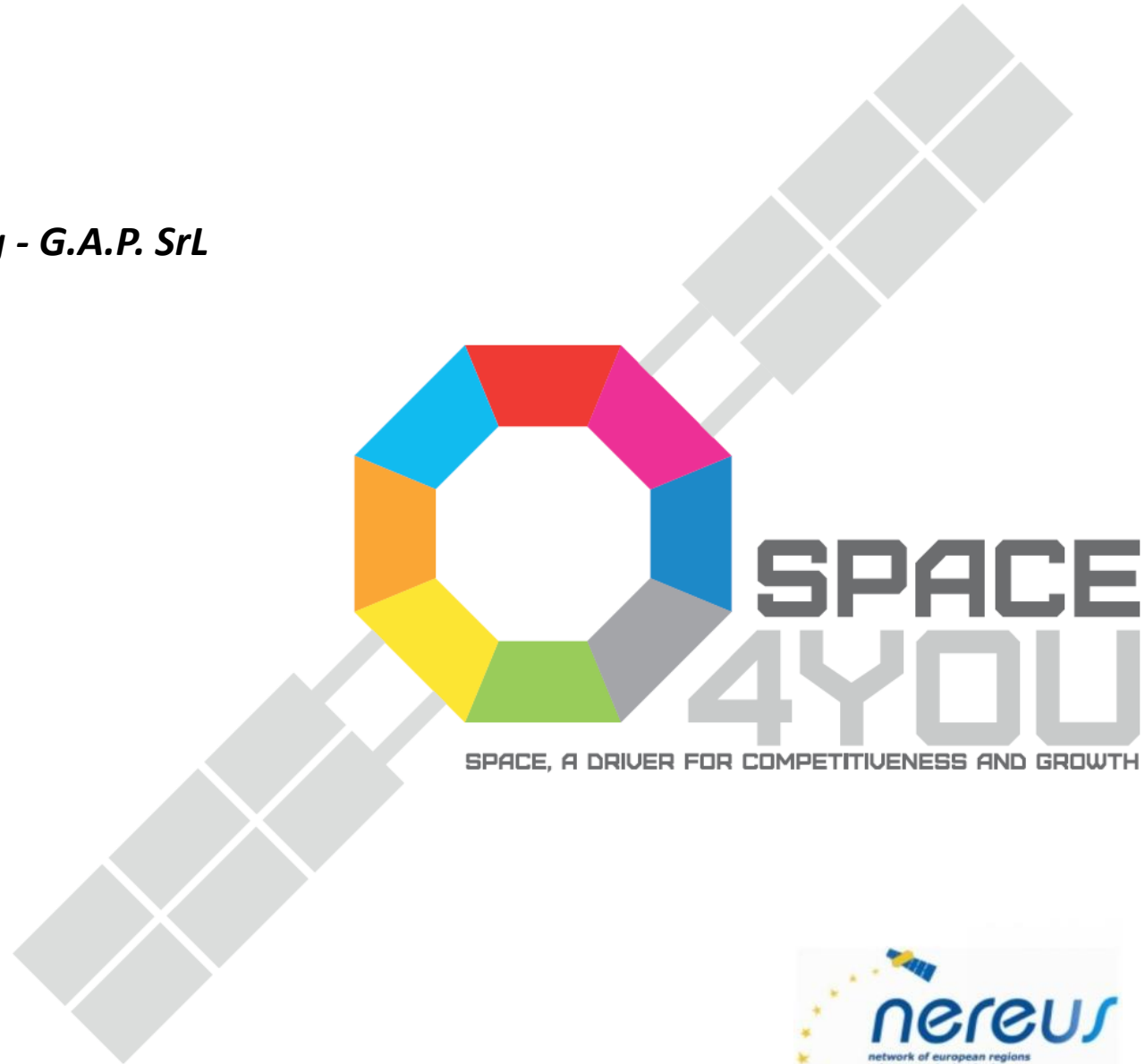


# Monitoring of Transport Infrastructures by using Synthetic Aperture Radar Satellites

**Davide Oscar Nitti**

*Geophysical Applications Processing - G.A.P. Srl*

*POLIBA Spin-off company*





# GAP SrL - Company Profile

*Geophysical Applications Processing s.r.l.* is a spin-off company of Politecnico di Bari, established on **February 2006**, whose **mission** is to develop products, processes and services with technological and scientific value in the field of satellite remote sensing and related HW/SW technologies, with a focus on Geomatic solutions and applications.



All the **activity** is performed on the basis of competencies and pay-offs of research projects, particularly in the Remote Sensing Group of the Department of Physics of Bari, in collaboration with the Institute for high studies on Intelligent Automation Systems (ISSIA) of the National Council of Research (CNR), based in Bari, Italy.



Shareholders of GAP are Politecnico di Bari, Planetek Italia srl and seven professionals among Polythecnic professors, CNR researchers and young Physics and Engineering graduates.



GAP is member of:





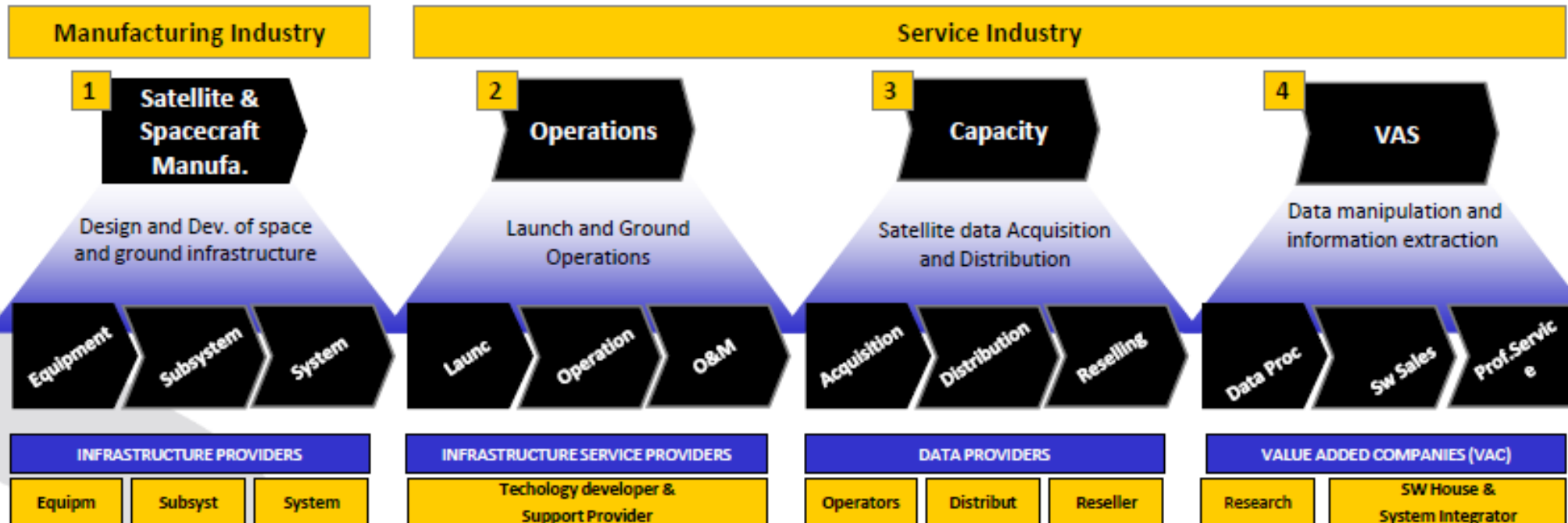
distretto  
aerospaziale  
pugliese  
bndrj626  
del ozbasare

*NEREUS International Conference*  
Space4You: Space, a driver for Competitiveness and Growth  
Bari, Hotel Villa Romanazzi - February 27th - 28th 2014



# Apulian Space Industry

## Know how



**SITAEL:** Electronics & microelectronics Systems

**ENGINSOFT:** Virtual prototyping

**SSI:** Large software design & development

**SITAEL:** Ground Equipment EGSE

**SSI:** Operations preparation planning

**Planetek:** System development & Data Distribution

**GAP:** Remote sensing processing & applications

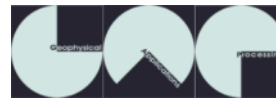
**Planetek:** GIS applications

**SIT:** Coastal & topography applications

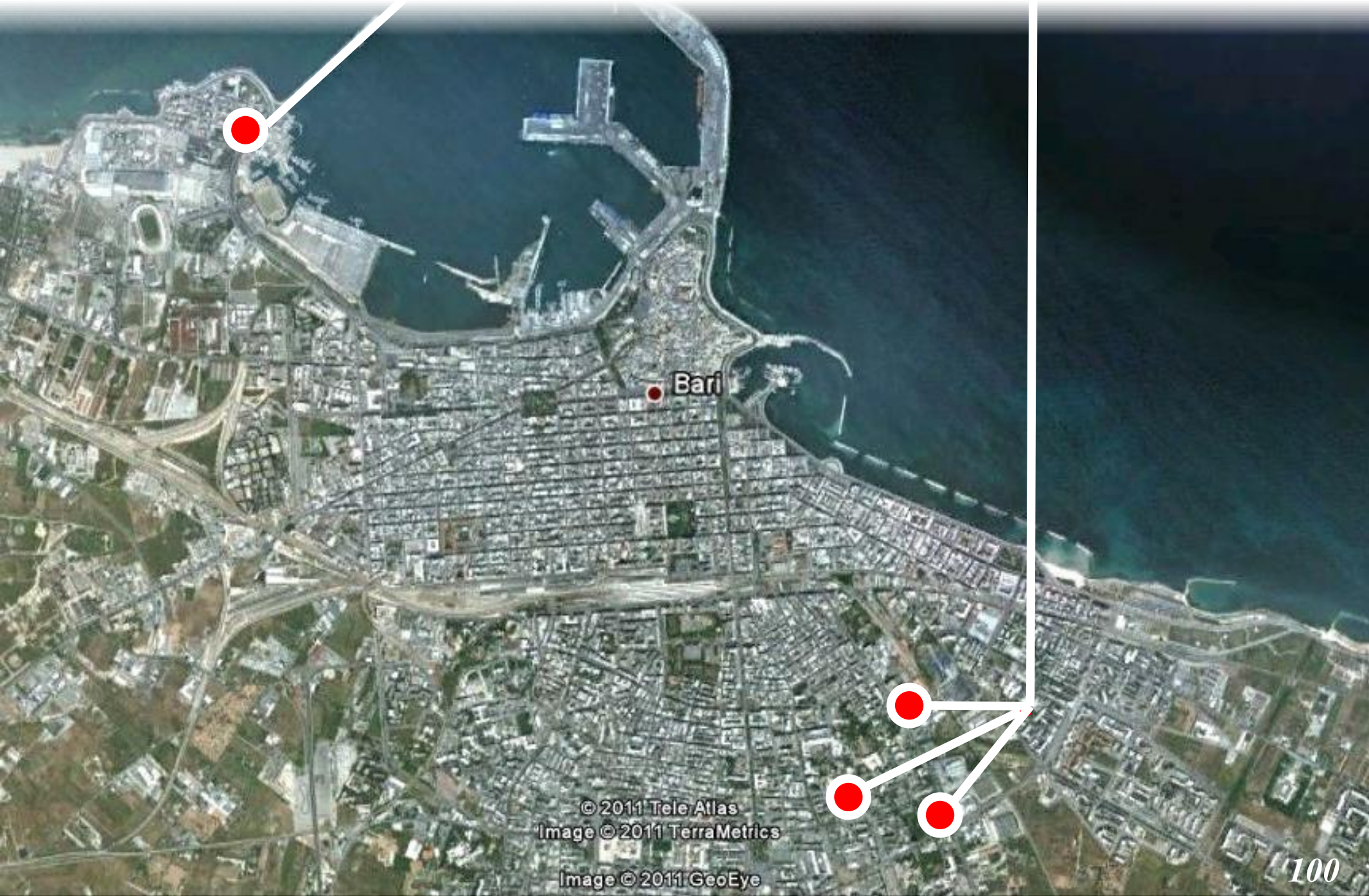
**SSI:** Swarm Intelligence applications

# Bari

PLANETEK  
ITALIA



ISSIA irpi  
sui Sistemi Intelligenti



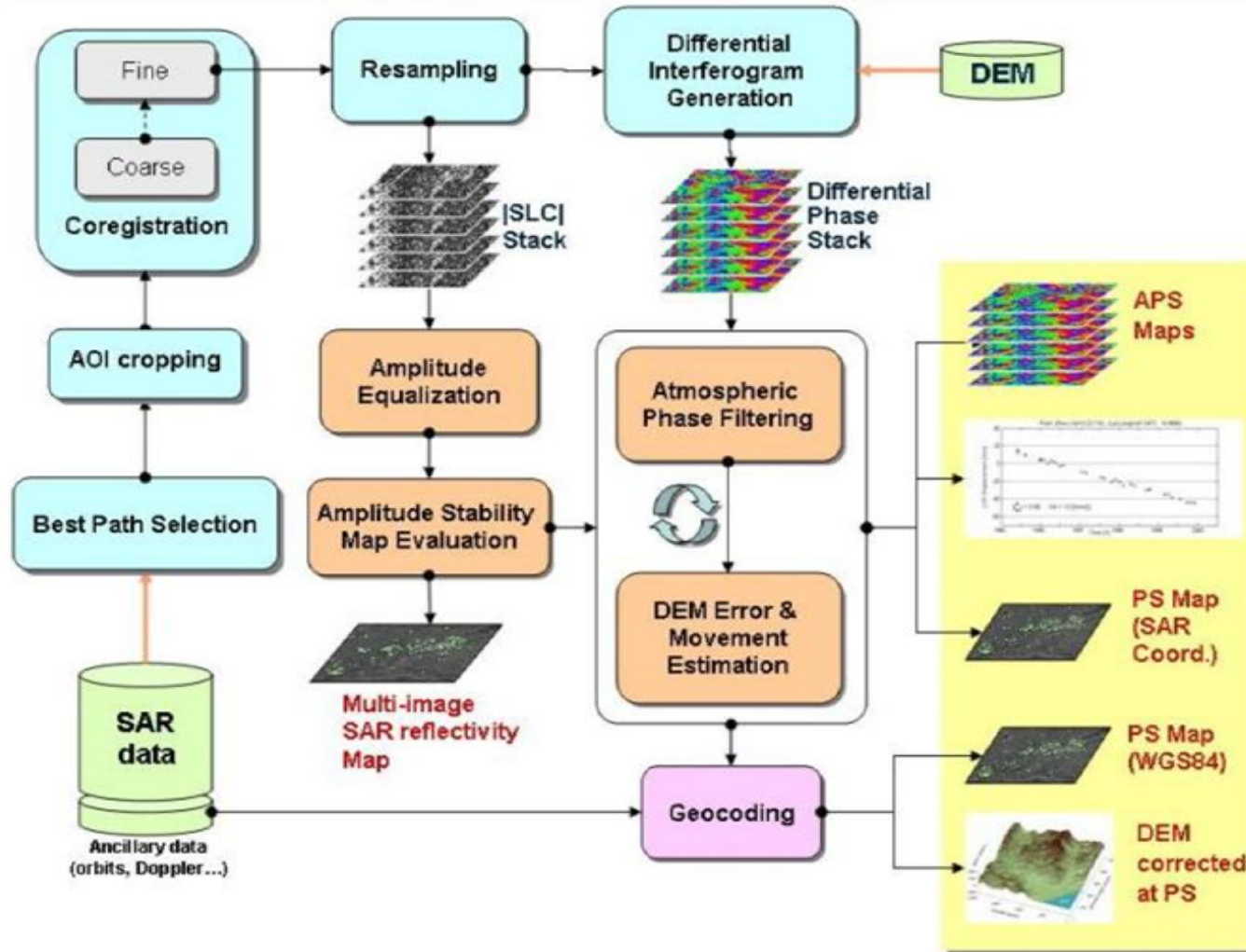
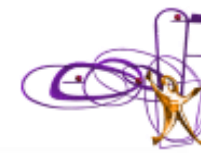
Bari

© 2011 Tele Atlas  
Image © 2011 TerraMetrics  
Image © 2011 GeoEye



# SPINUA PSI-like processing chain

Stable Point Interferometry even in Un-urbanized Areas



## LEWIS project – Landslide Early Warning Integrated System

Goal: prototype landslide warning service development, based on the use of periodic earth observation data integrated with other in situ geotechnical data



FIFTH FRAMEWORK PROGRAMME



NEREUS International Conference  
Space4You: Space, a driver for Competitiveness and Growth  
Bari, Hotel Villa Romanazzi - February 27th - 28th 2014



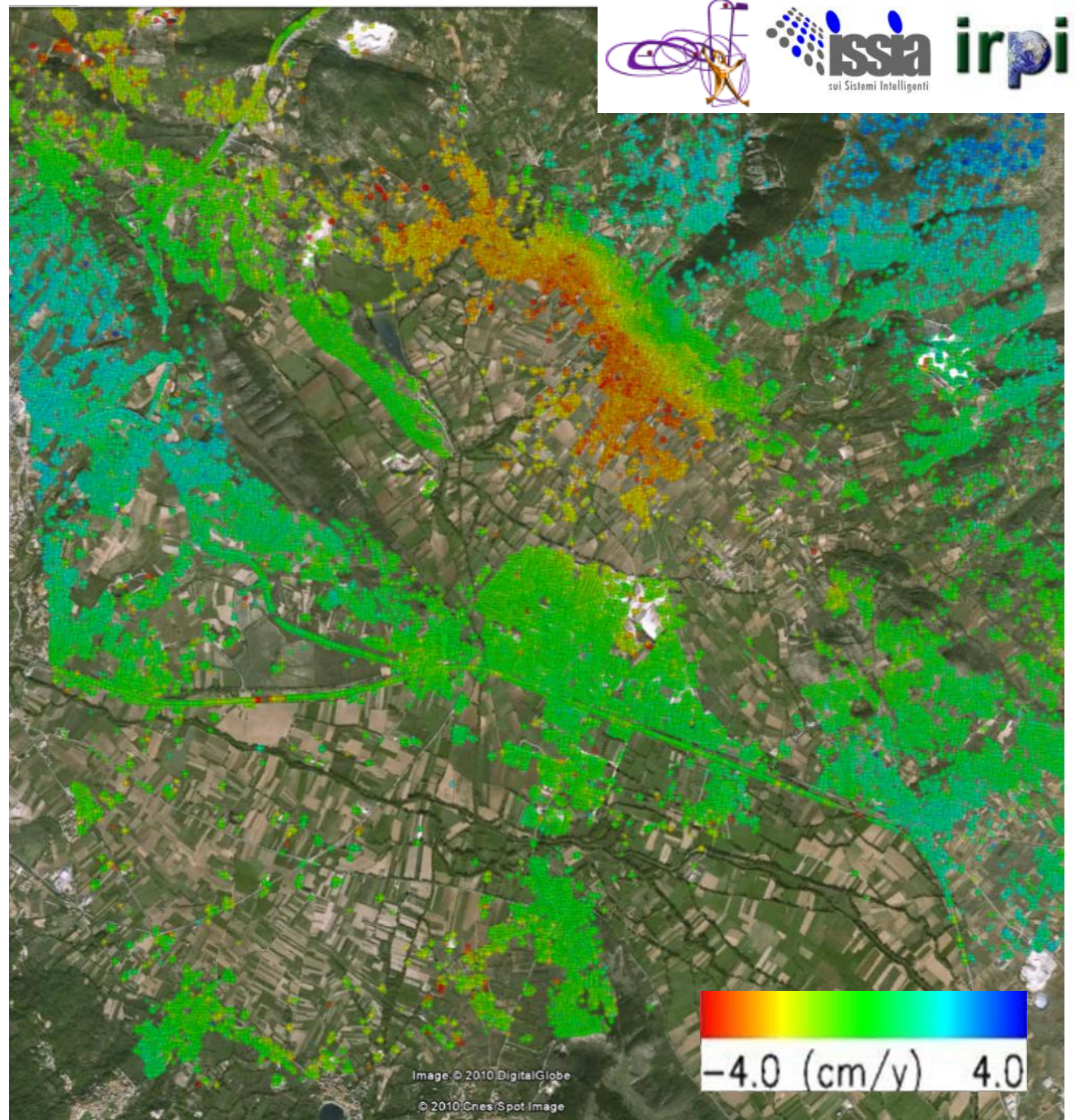
# PSI monitoring examples

*Sensor:*

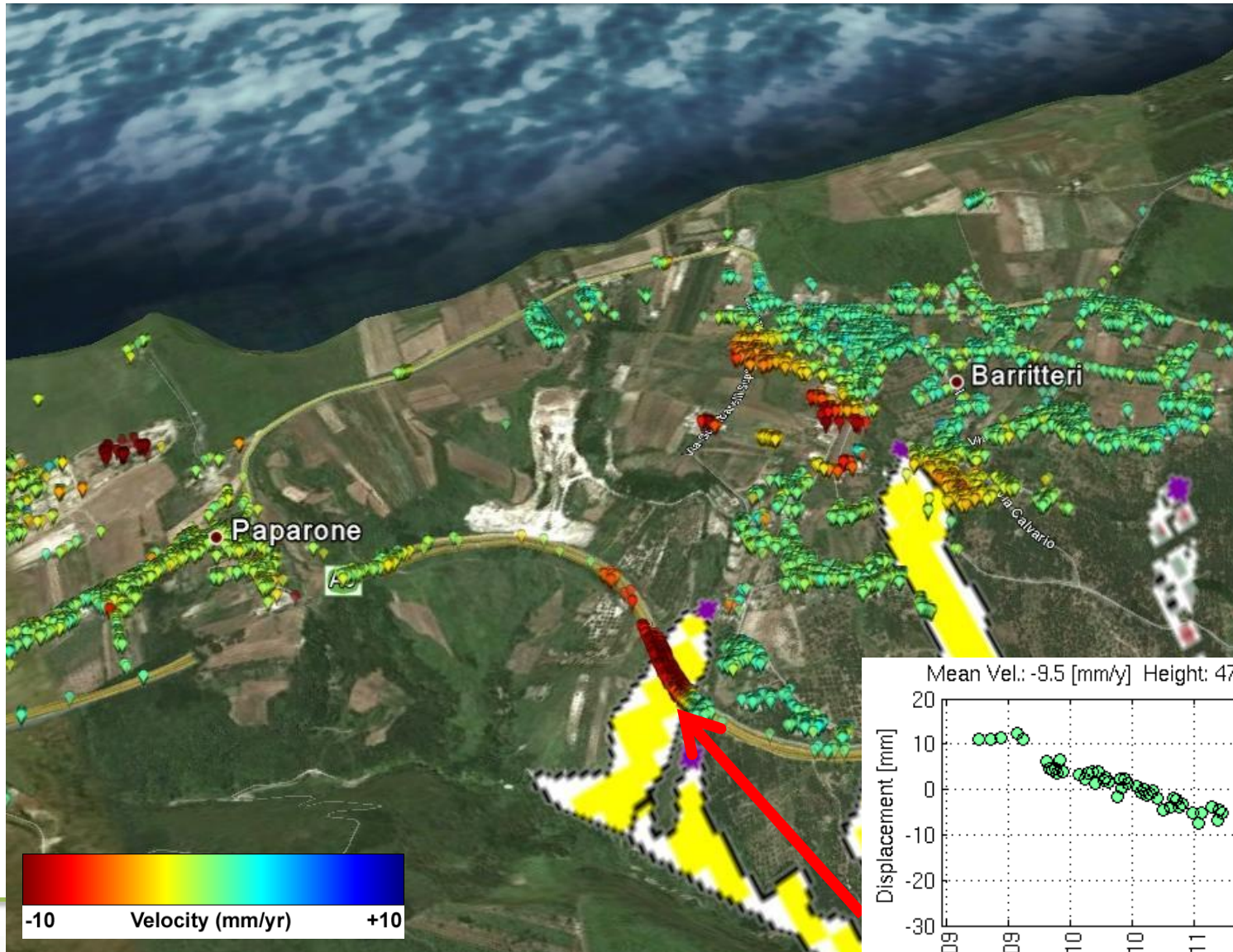
*COSMO/SkyMed*

*Dataset: Apr-Oct'09*

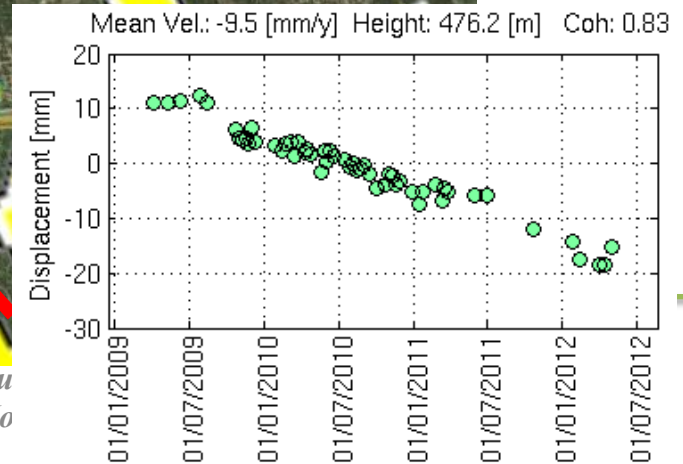
Test Site: Paganica (AQ)  
Post-seismic Analysis



## Test Site: Highway A3 Napoli-Reggio Calabria

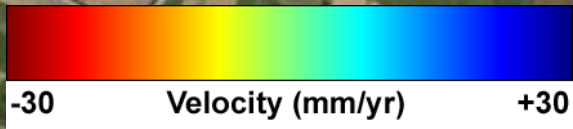
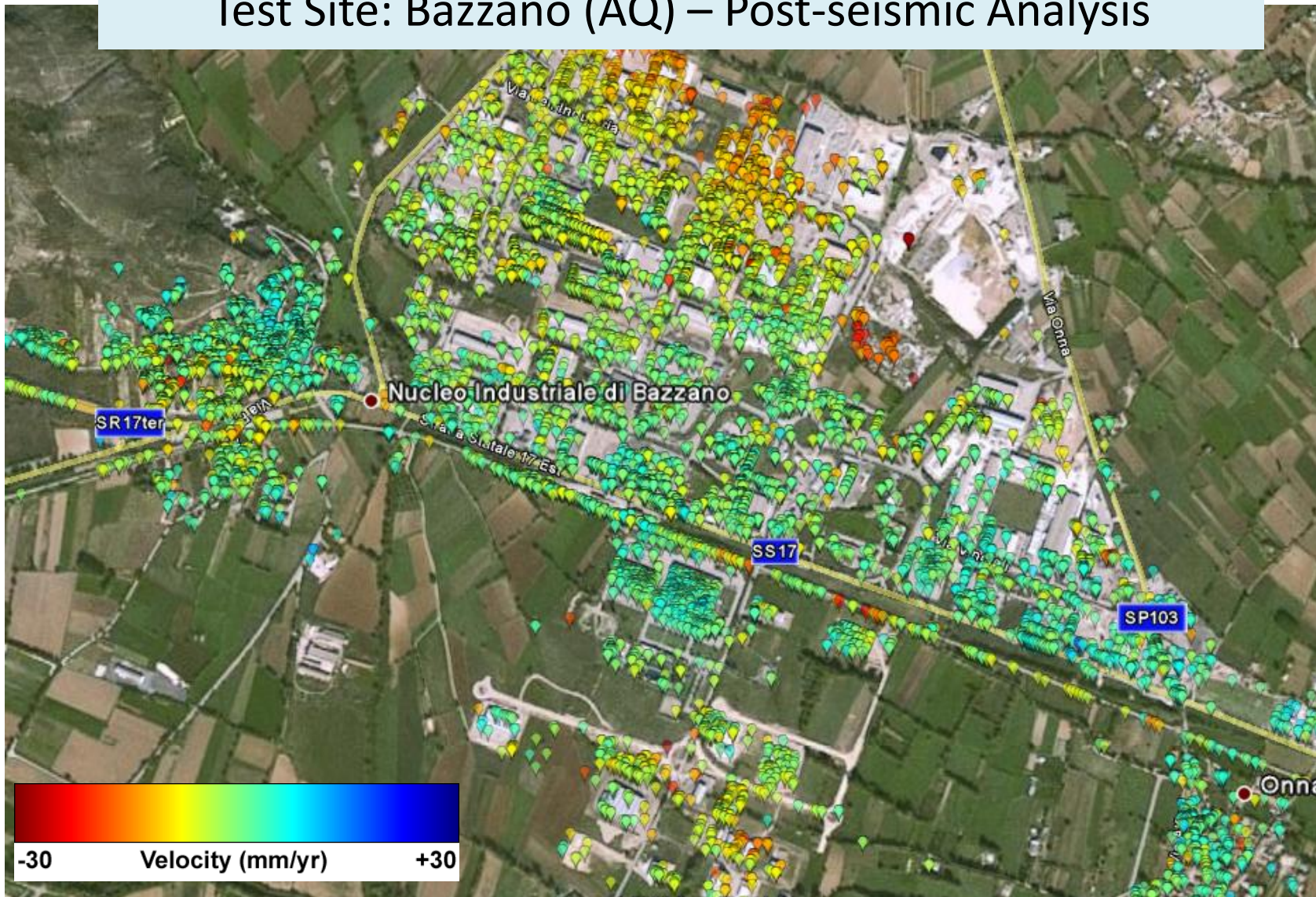


- Type of movement**
- Rockfall/topple
  - Rotational/translational slide
  - Lateral spread
  - Slow earth flow
  - Rapid debris flow
  - Sinkhole
  - Complex landslide
  - Unclassified
  - Deep-seated gravitational slope deformation
  - Area affected by rockfalls/topples
  - Area affected by sinkholes
  - Area affected by shallow landslides
- IFFI**



Space4You  
Bari, Ho

## Test Site: Bazzano (AQ) – Post-seismic Analysis

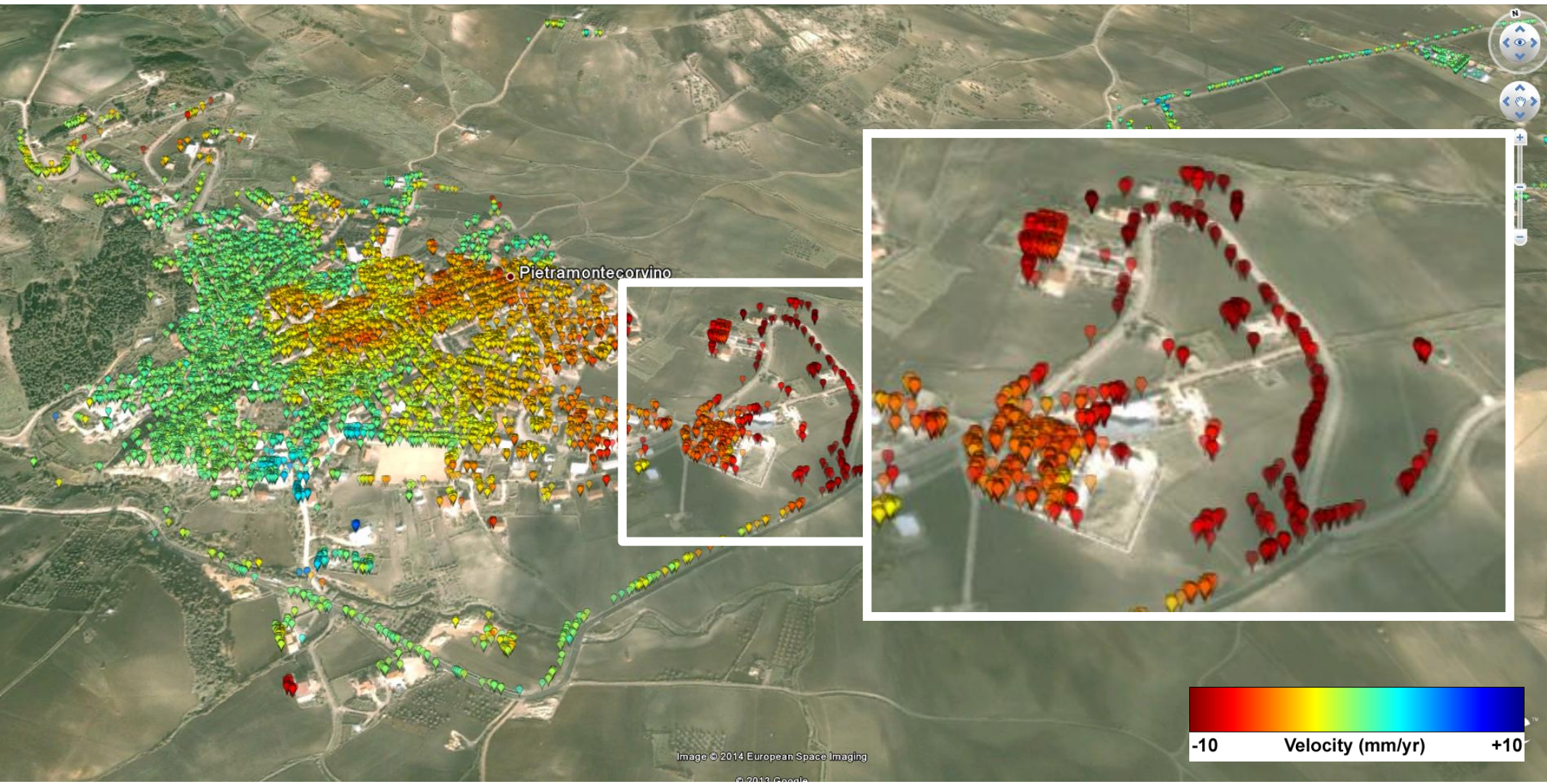




## Test Site: L'Aquila – Post-seismic Analysis



## Test Site: Pietramontecorvino (FG) – Daunia, Italy

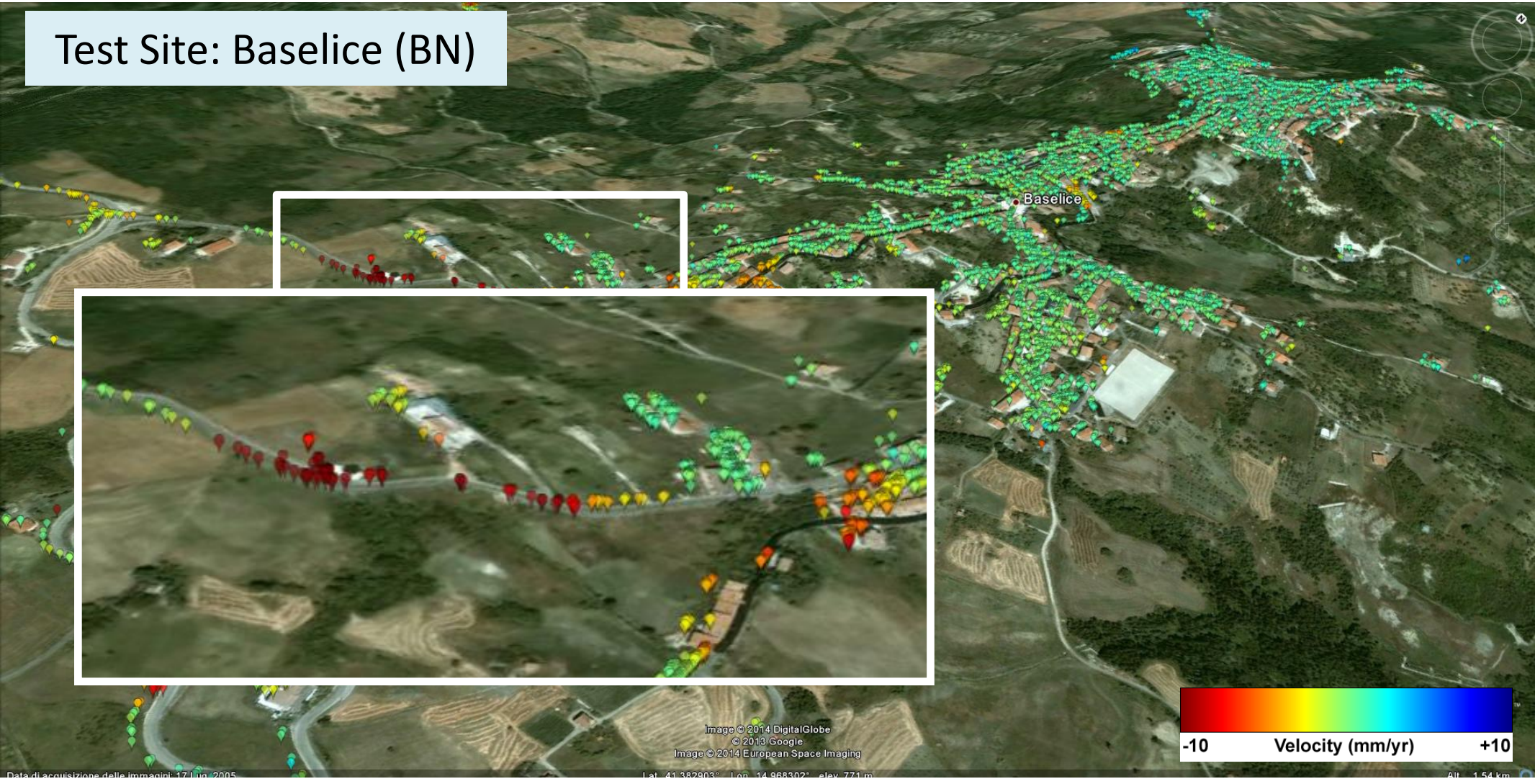


# PSI monitoring examples

Sensor: TerraSAR-X - Dataset: Jan'10-Mar'11

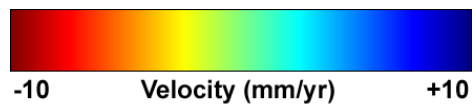
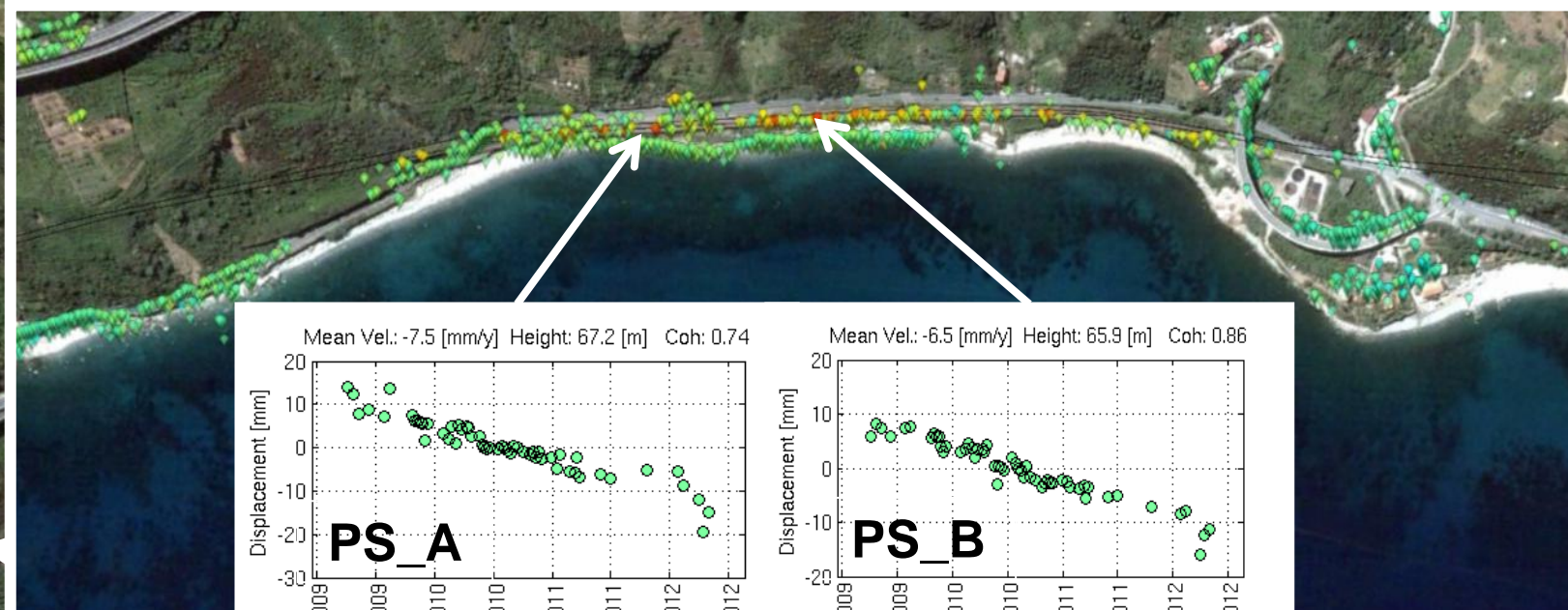


Test Site: Baselice (BN)



Data di acquisizione delle immagini: 17 Lug 2005

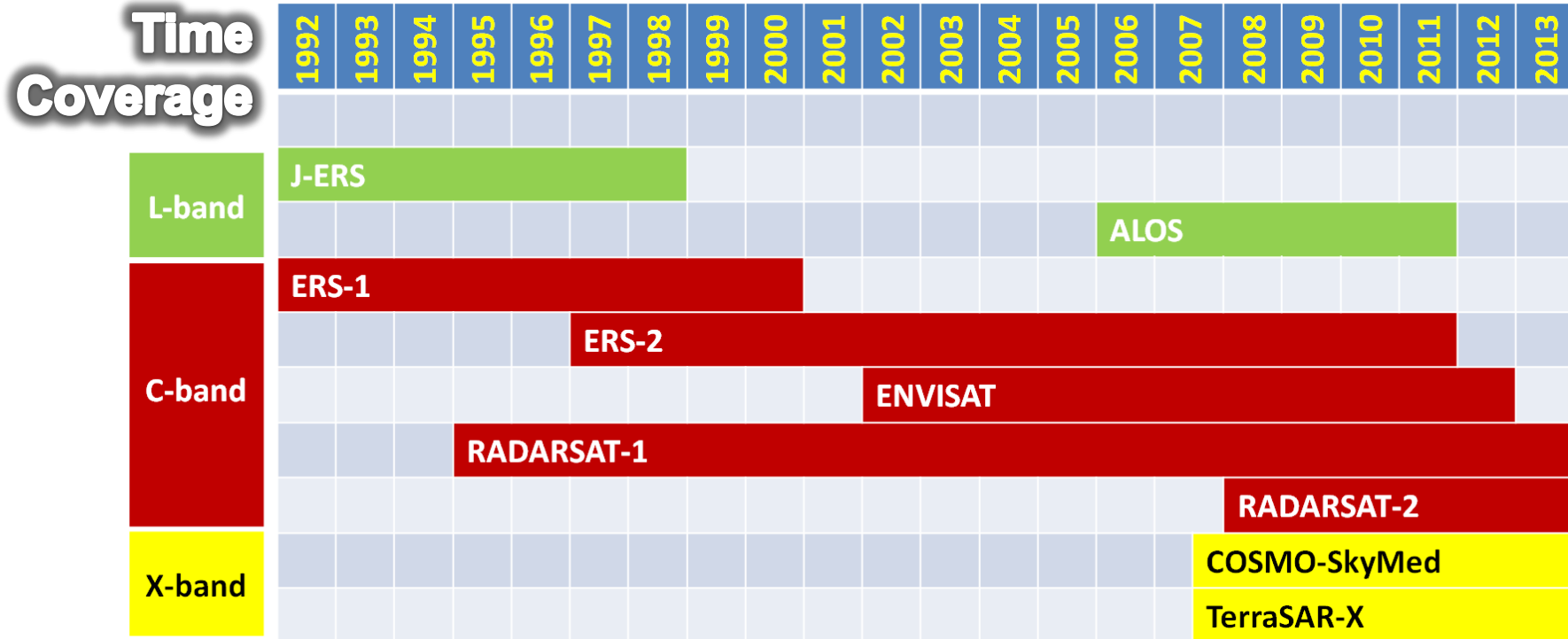
## TEN-T Calabrian Railway – Scilla-Favazzina (Italy)



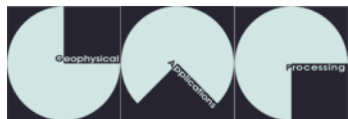


# Environmental Monitoring

## Satellite Synthetic Aperture Radar Missions



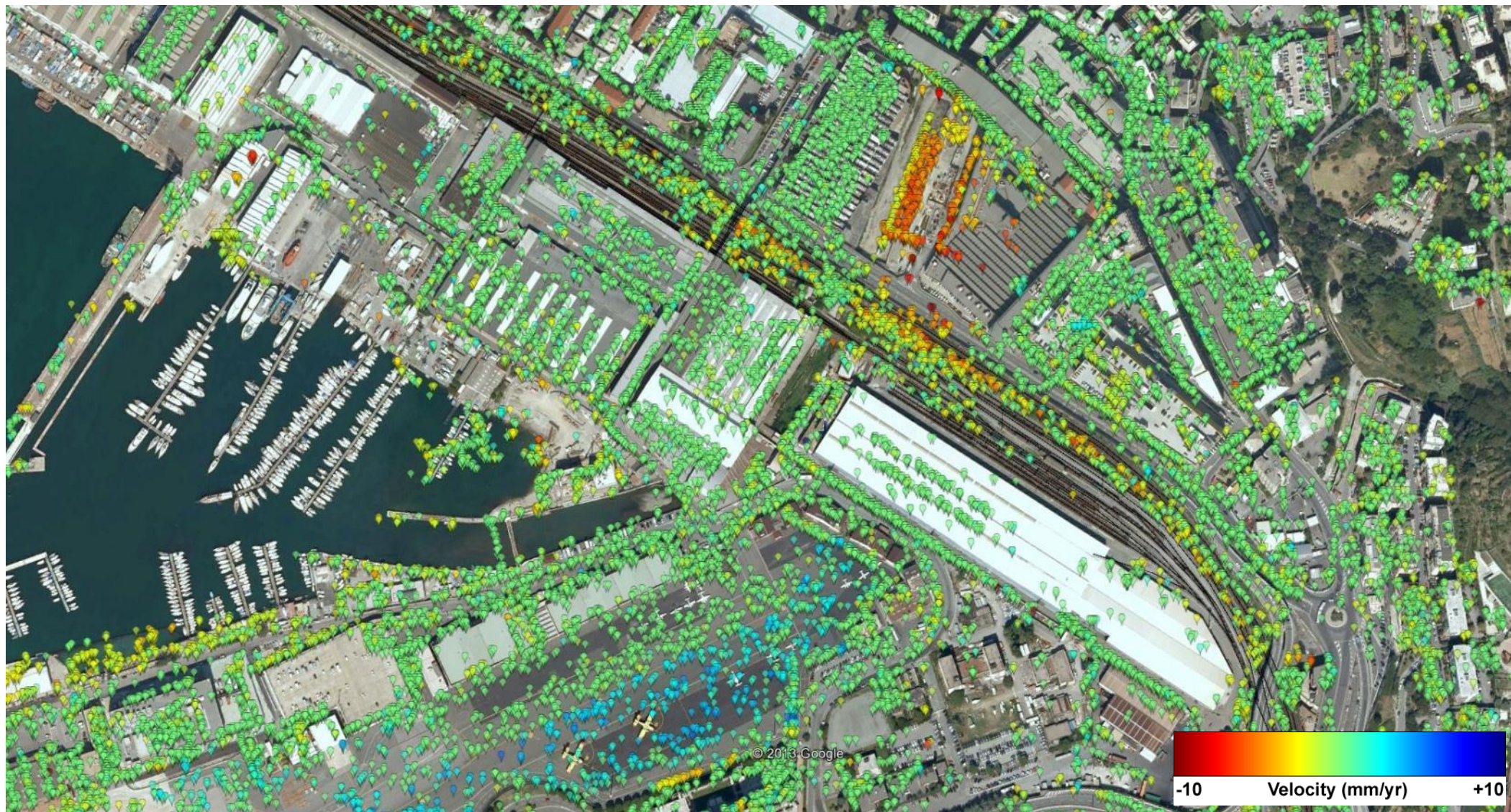
- ✓ Historical Analysis (exploitation of existing SAR datasets)
- ✓ Monitoring (tasking of operational satellites for new acquisitions over the AOI)



# PSI monitoring examples

Test Site: Genoa  
Sestri P. Rail Station

Sensor: COSMO/SkyMed - Dataset: Feb'11-Nov'13



© 2013 Google



NEREUS International Conference  
Space4You: Space, a driver for Competitiveness and Growth  
Bari, Hotel Villa Romanazzi - February 27th - 28th 2014

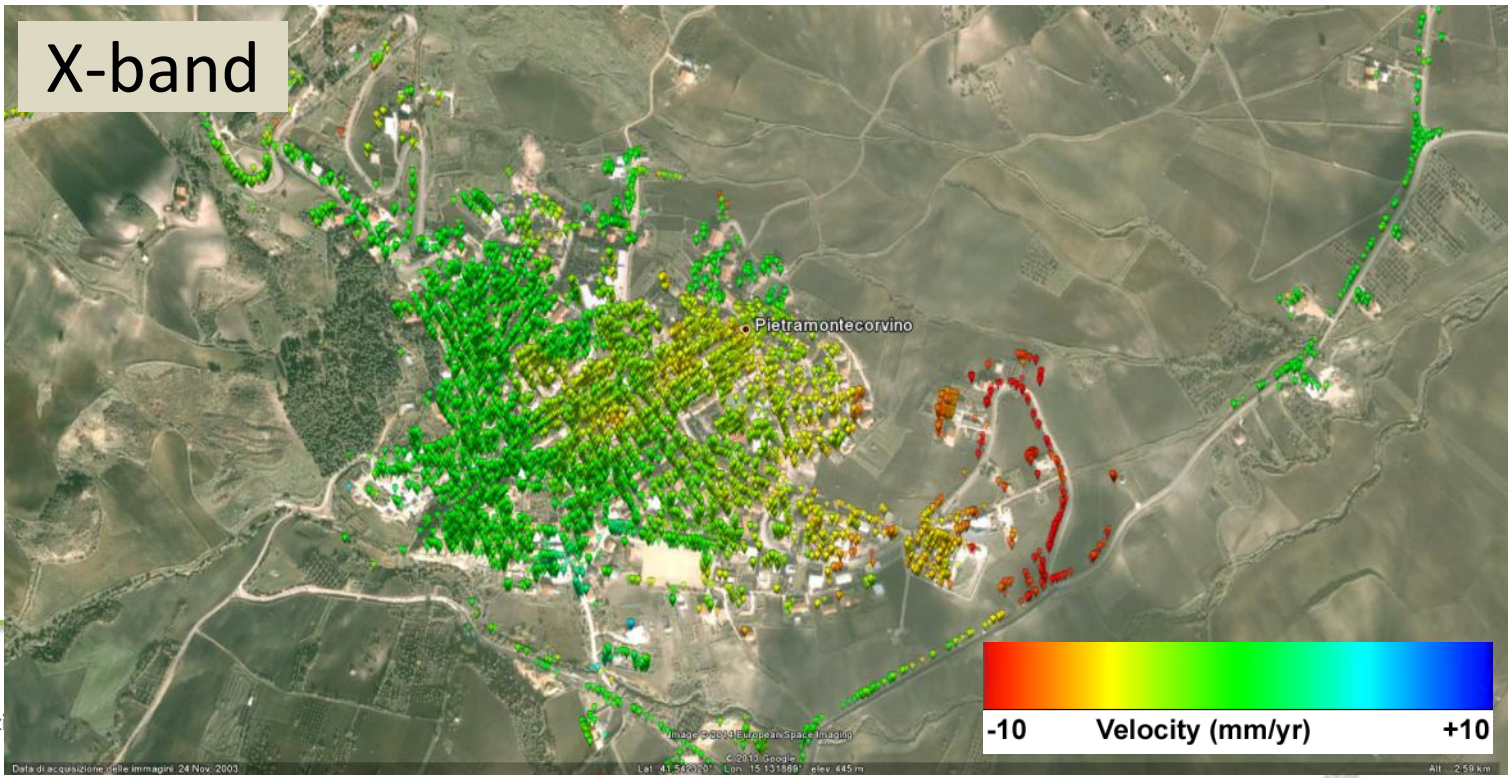
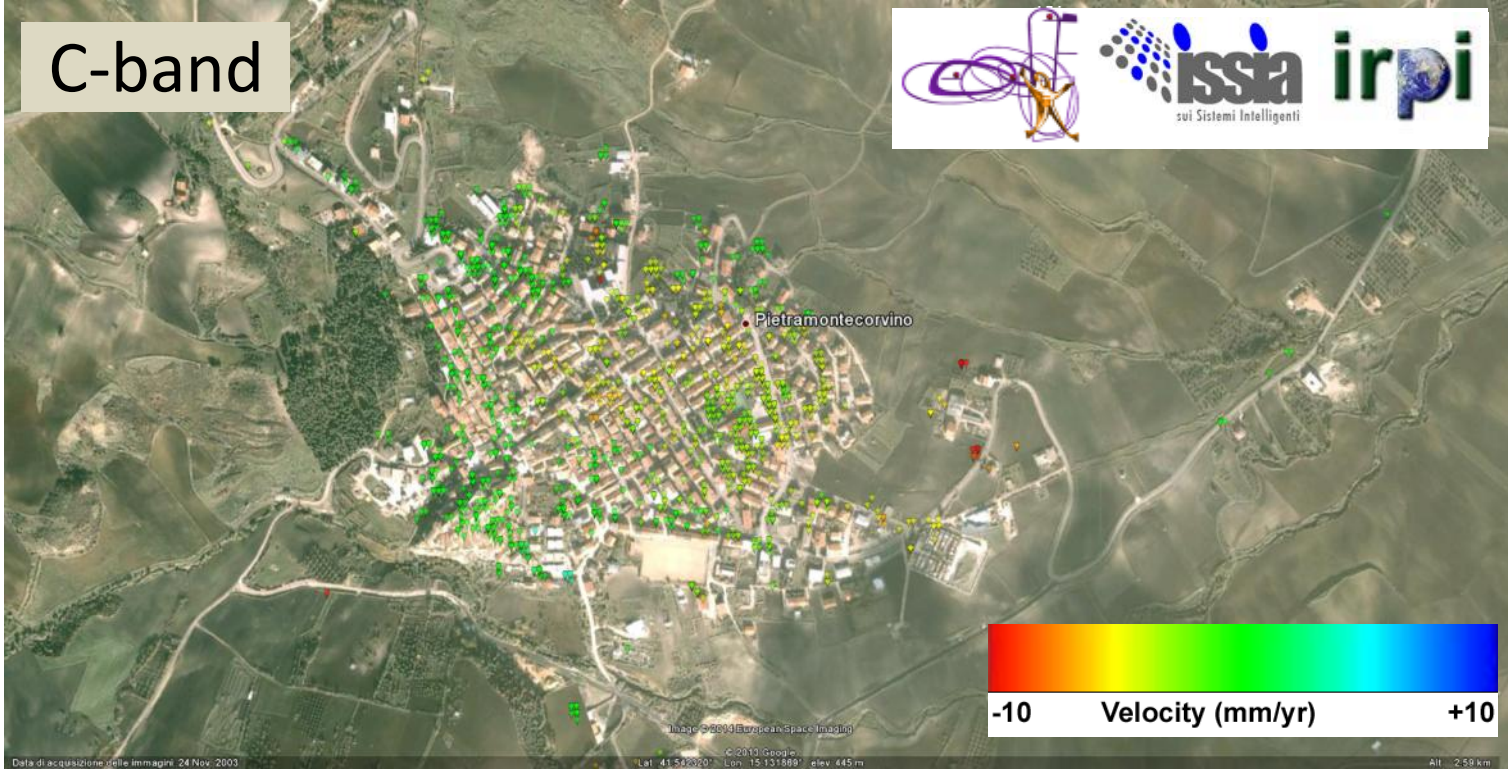


# C- vs X-band PSI maps

Test Site: Daunia  
Pietramontecorvino

C-band dataset  
Sensor: ENVISAT  
Oct'02-Jan'10

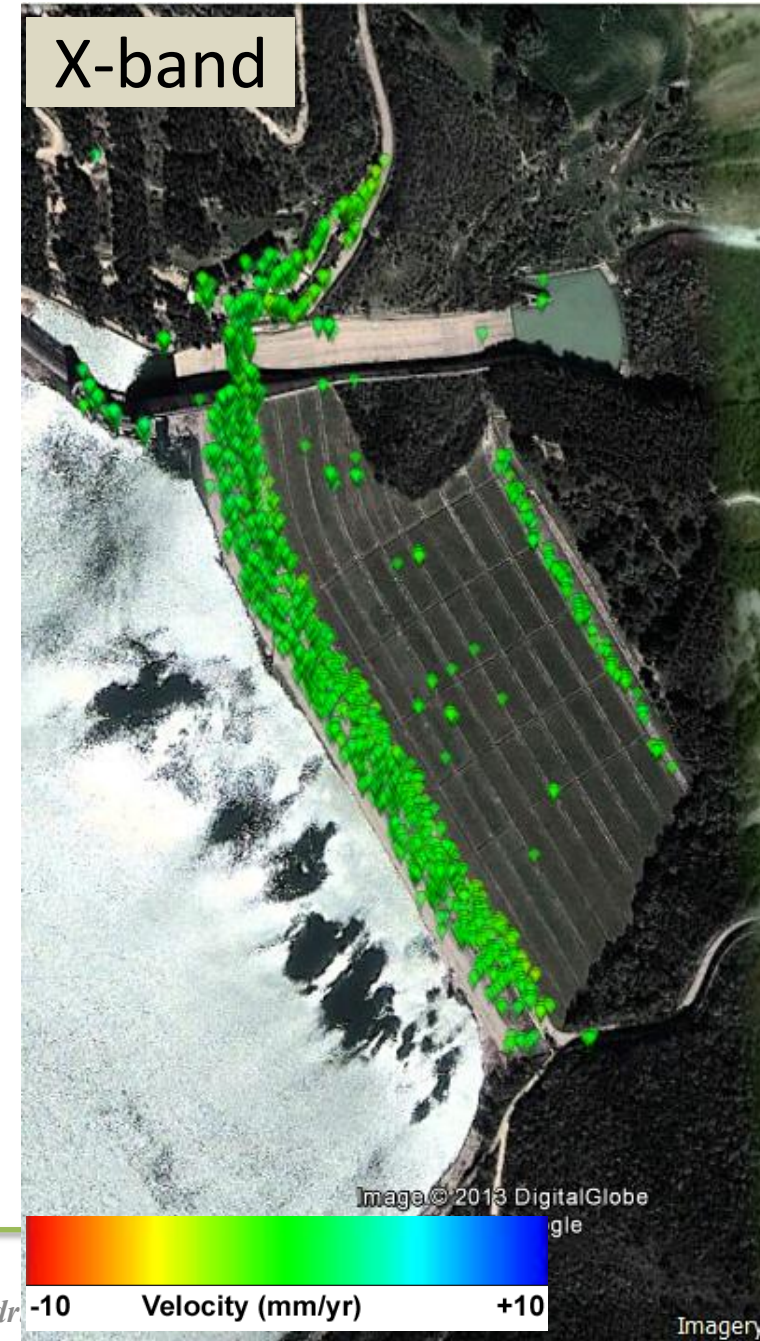
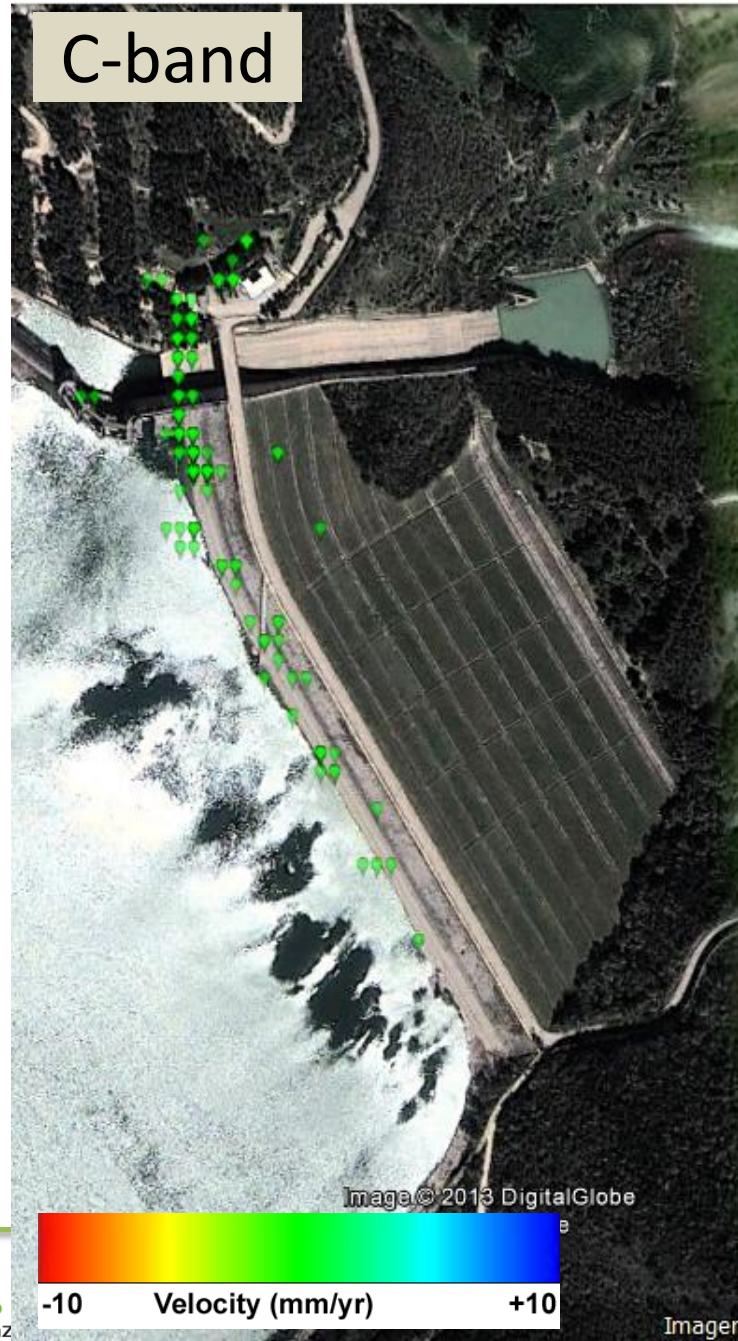
X-band dataset  
Sensor: TerraSAR-X  
Jan'10-Mar'11



Test Site: Dam Occhito, Daunia

C-band dataset  
Sensor: ENVISAT  
Oct'02-Jan'10

X-band dataset  
Sensor: TerraSAR-X  
Jan'10-Mar'11

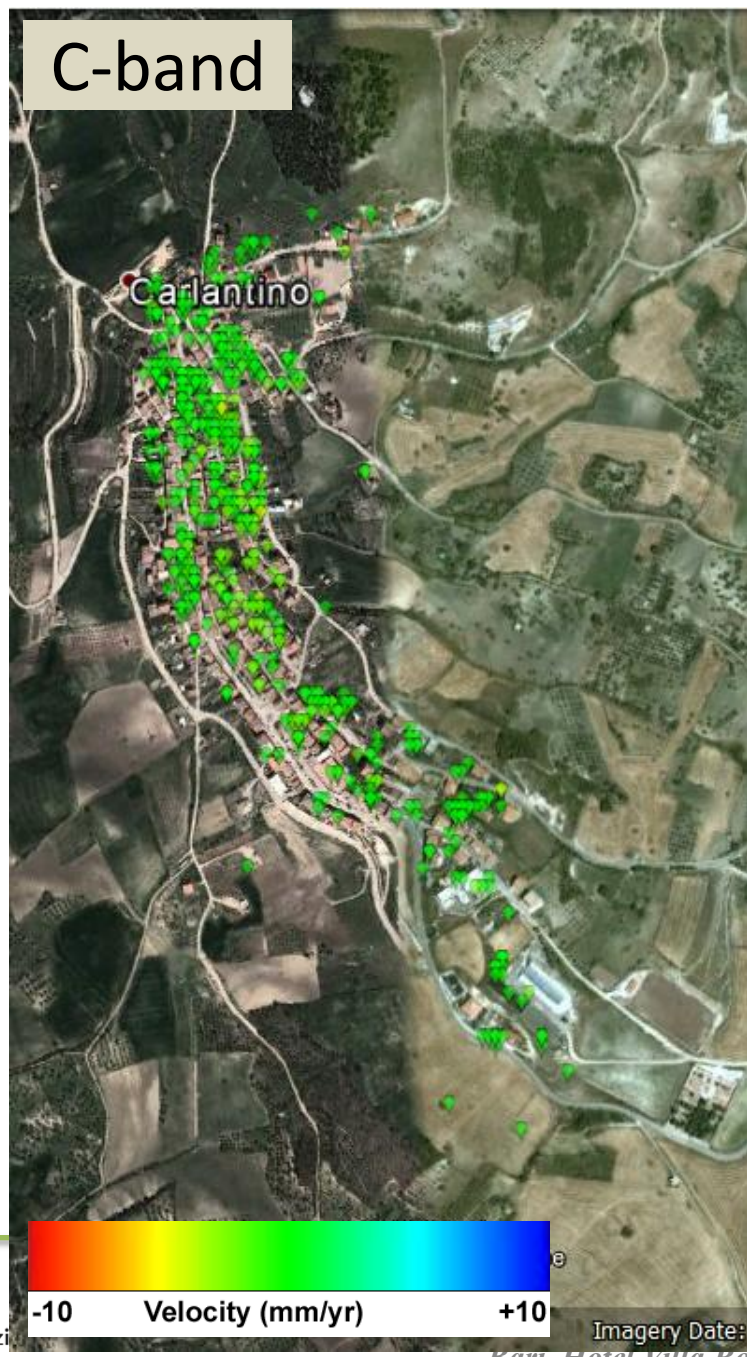




Test Site  
Carlantino, Daunia

C-band dataset  
Sensor: ENVISAT  
Oct'02-Jan'10









X-band dataset  
Sensor: TerraSAR-X  
Jan'10-Mar'11





# Research Projects

*GeoHazards/Infrastructure Monitoring Through EO technologies*

Project Name	Acronym (IT/EN)	Funding Institution	Prime
MORFEO	<i>Monitoraggio del Rischio da Frana con tecnologie EO</i>	Progetto Pilota ASI	CGS Carlo Gavazzi Space SpA
	<i>Landslide Monitoring and Risk Assessment through EO data</i>		 Carlo Gavazzi Space SpA
FranePuglia	<i>FranePuglia</i>	Regione Puglia PO FESR 2007-2013	GAP – Geophysical Applications Processing Srl
	<i>ApulianLandslides</i>		
ADF	<i>Archiviazione e Fusione di Dati EO</i>	ASI Il Bando PMI	Planetek Italia Srl
	<i>Archiving Data Fusion</i>		
CAR-SLIDE	<i>Sistema di monitoraggio e mappatura di eventi franosi</i>	MIUR PON R&C 2007-2013	TecnoGamma SpA
	<i>Landslide Monitoring and Mapping System</i>	 MINISTERO DELL'ISTRUZIONE DELL'UNIVERSITA' E DELLA RICERCA	 a mermec group company

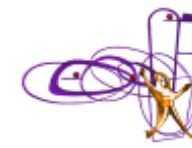


*NEREUS International Conference  
Space4You: Space, a driver for Competitiveness and Growth  
Bari, Hotel Villa Romanazzi - February 27th - 28th 2014*



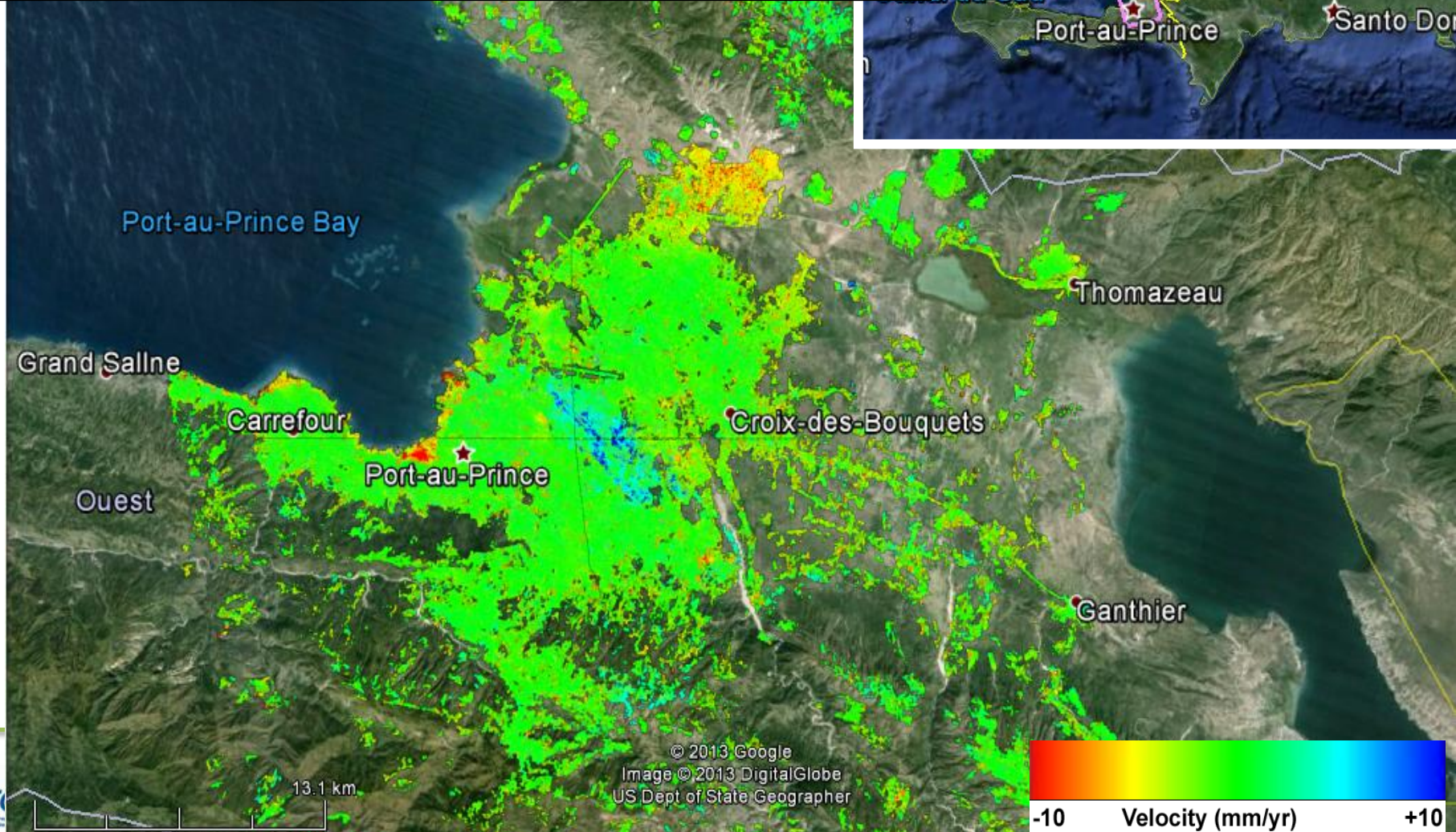
# PSI monitoring examples

Sensor: COSMO/SkyMed



Test Site: Haiti

Year 2011		Year 2012		Year 2013	
(23 images)		(42 images)		(38 images)	
2011	2011	2012	2012	2013	2013
I Semester	II Semester	I Semester	II Semester	I Semester	II Semester
(1 image)	(22 images)	(22 images)	(20 images)	(29 images)	(9 images)



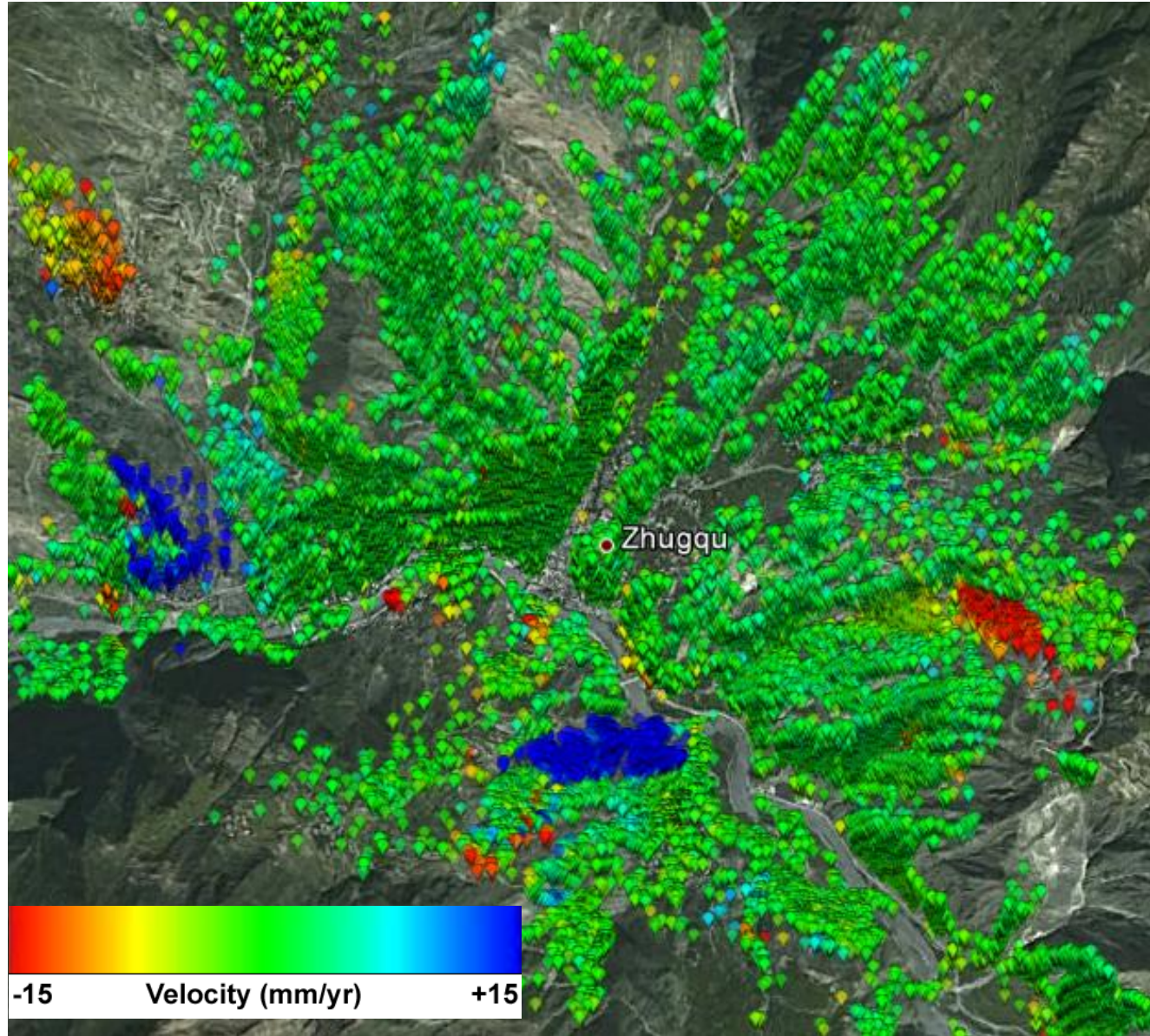
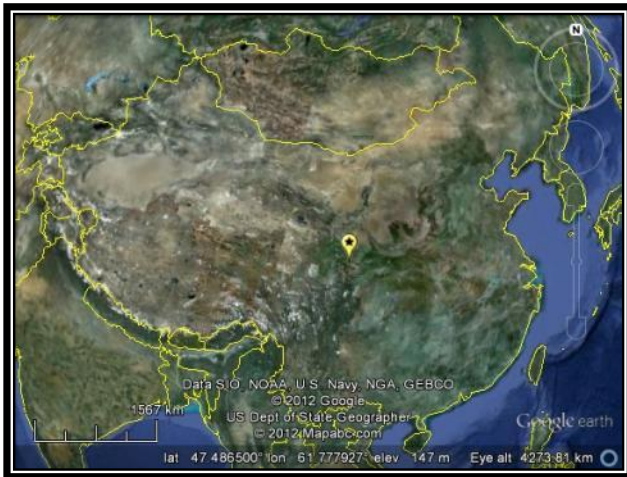
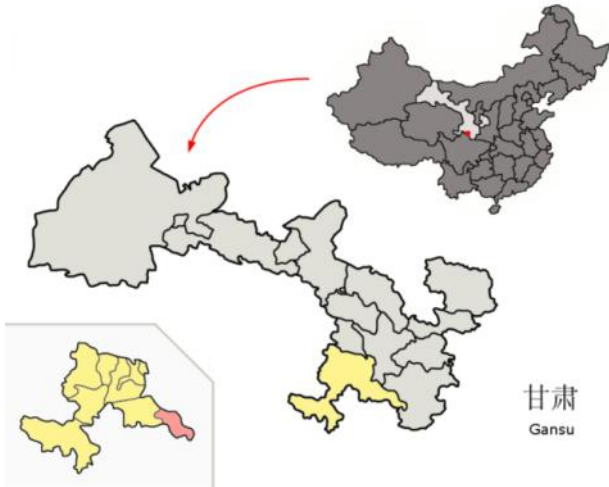
© 2013 Google  
Image © 2013 DigitalGlobe  
US Dept of State Geographer



lat 18.682193° lon -72.446727° elev -73 m eye alt 57.19 km

Sensor: COSMO/SkyMed – Dataset: Nov'10-Feb'12

Test Site:  
Zhouqu, Gansu, China





# Future perspectives

## *Sentinel-1*



*C-band*

*Revisit Time: up to 6 days*

*Launch: mid-2014*

*Interferometric Wide Swath (IWS)*





# Info and Contacts

## Address

*Geophysical Applications Processing - G.A.P. Srl*  
*c/o Dipartimento Interateneo di Fisica "Michelangelo Merlin"*  
*Via Amendola 173, 70126 Bari, ITALY*

**Tel.** +39 080544-2180 / 2396 / 3224

**Fax.** +39 080544-3144 / 3224

**e-mail:** [info@gapsrl.eu](mailto:info@gapsrl.eu)

[www.gapsrl.eu](http://www.gapsrl.eu)



*Visit our stand !*

## Thanks for your attention