



# → WHAT CAN SENTINELS DO FOR REGIONS?

A discussion about the use of Copernicus satellite data within Local and Regional Authorities in Europe

MAZOVIA

By Elżbieta Wołoszyńska-Wiśniewska,

UNEP/GRID-Warsaw Centre



# MAZOVIA | Map



## MAZOVIA REGION



## BRUSSELS REGION



200 000 inhabitants

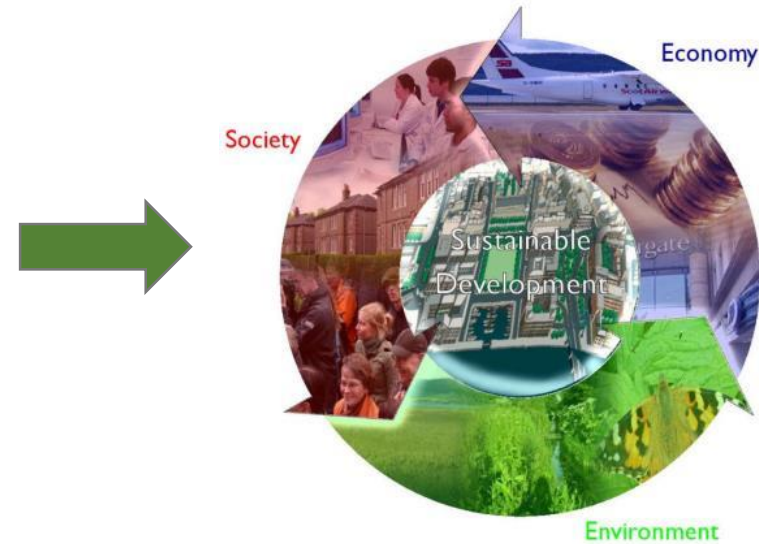


1000 km<sup>2</sup>

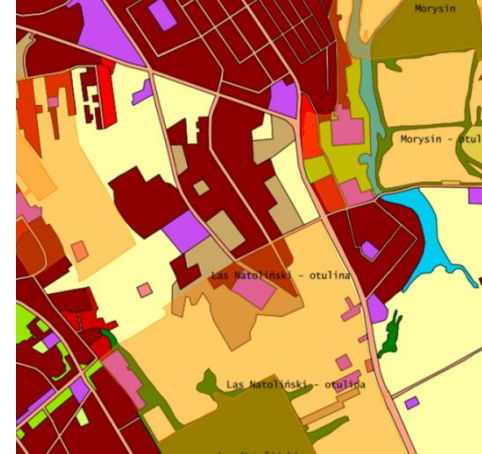
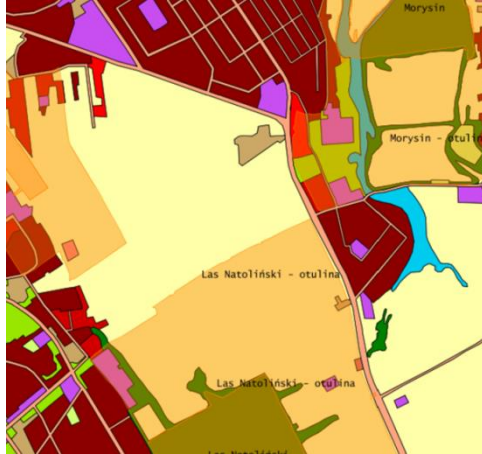
*Icons designed by Freepik.com*

*Map by TUBS (CC BY-SA 3.0)*

# MAZOVIA | Territorial challenges

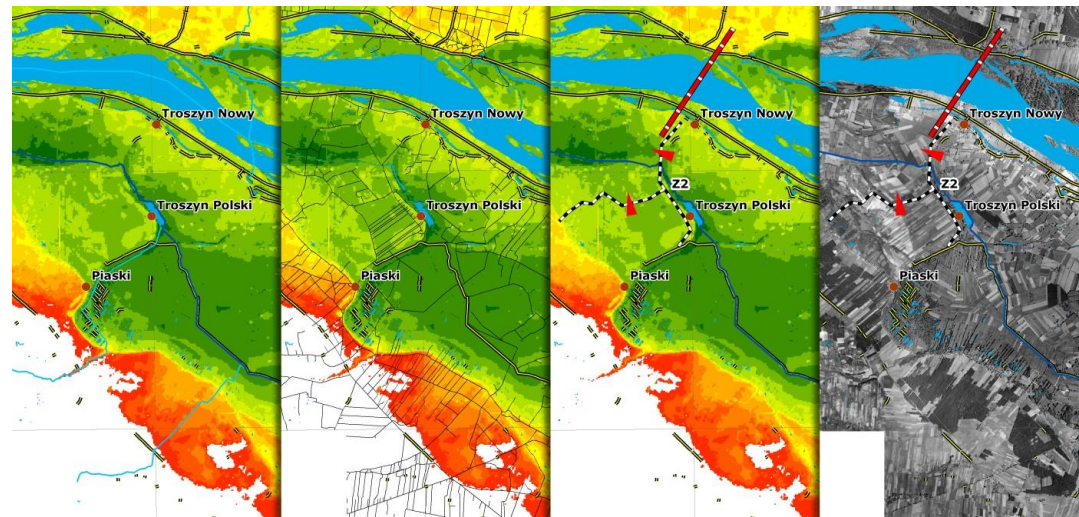


# MAZOVIA | Experience with Copernicus



Source: UNEP/GRID-Warsaw Centre (Geoserwis project)

Source: Space Research Centre of the Polish Academy



- **BUILD CAPACITY** –  
**HUMAN RESOURCES SYSTEMATIC TRAINING**
- **DOCUMENTATION** –  
**CATALOGUE SKILLS-COMPETENCES-NEEDS-  
PRODUCTS-SERVICE PROVIDERS**
- **PLATFORMS FOR EXCHANGE** –  
**CLUSTER NEEDS, STIMULATE INTERREGIONAL  
COLLABORATION**