



→ WHAT CAN SENTINELS DO FOR REGIONS?

A discussion about the use of Copernicus satellite data within Local and Regional Authorities in Europe

LOMBARDY

Silvia Fabrizi - CGS OHB Program Manager

On behalf of DG Casa Housing sociale, Expo 2015 e Internazionalizzazione delle Imprese - Regione Lombardia



LOMBARDY | Map



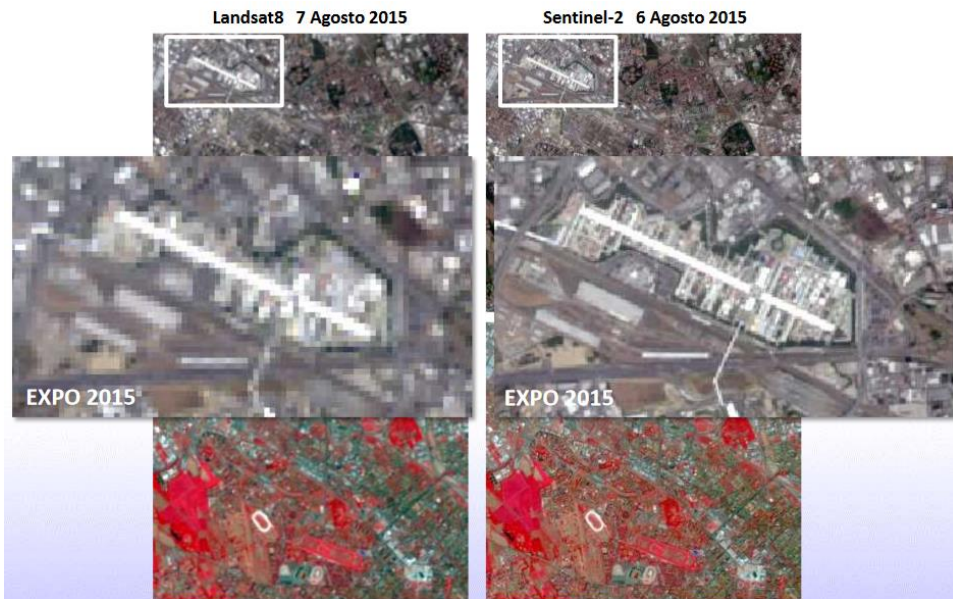
Regione
Lombardia



LOMBARDY | Territorial challenges



LOMBARDY | Experiences with Copernicus



Earth Observation use since the early 2000s in order to monitor the most critical environmental issues of the Region.

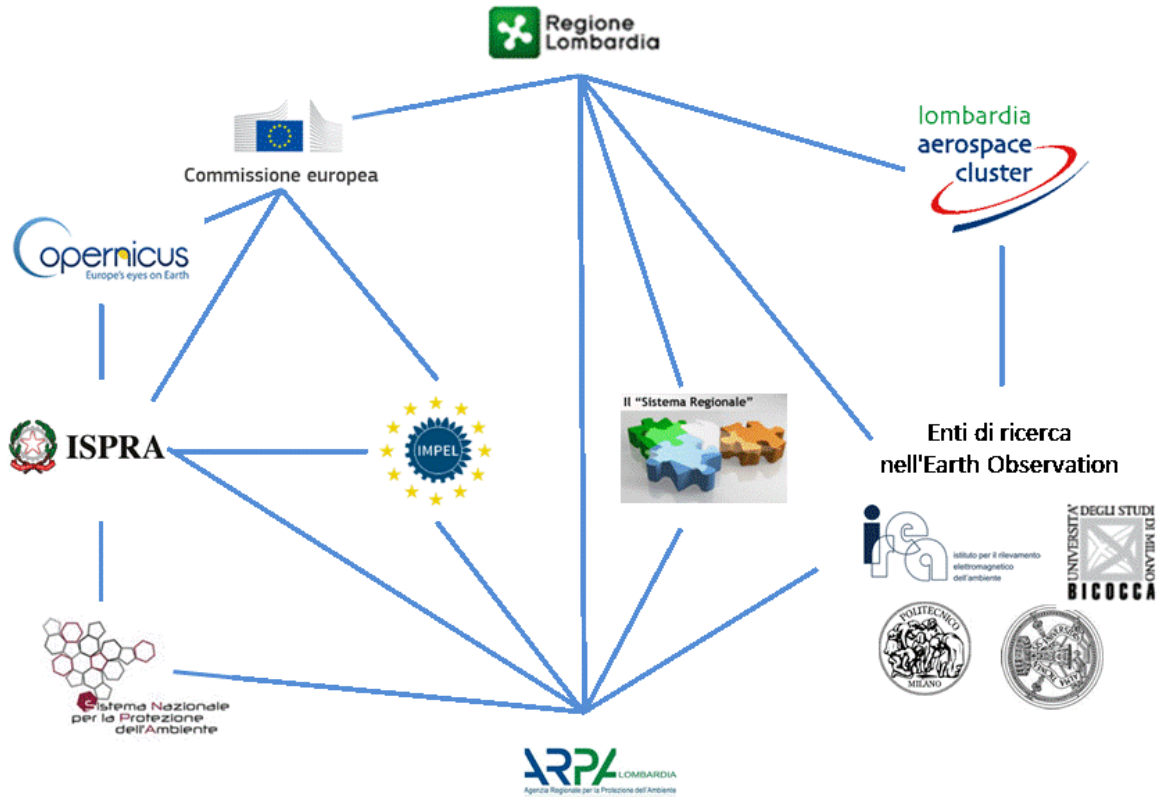
Very positive feedback with Sentinels in terms of image quality, frequency and readiness.

Lack of costs of Sentinels images as an enormous incentive to use them.

Huge potential for downstream applications of Earth observation data and information related to Copernicus.

So far only a small part of the possible solutions has been explored to meet regional needs.

LOMBARDY | Further development



Lombardy Region
and ARPA Lombardia
lie at the heart of

CREO
**Regional Centre for
Earth Observation**