

## **Joint Working Group Meeting**

### **Working Groups**

#### **Communication, Education and Training**

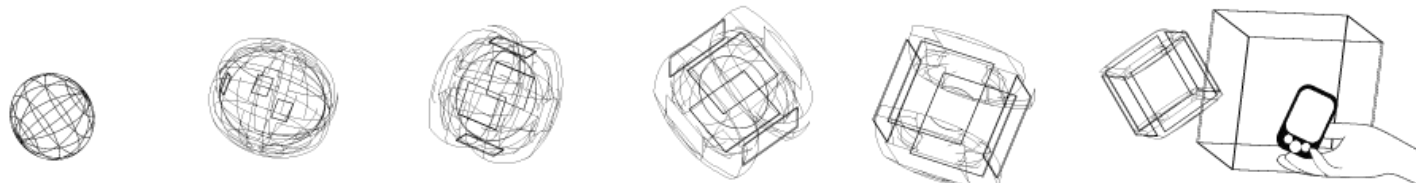
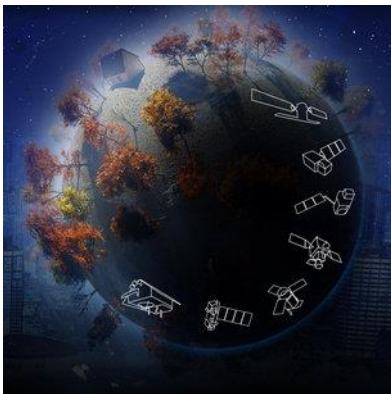
chair Martina Hilger

#### **Global Navigation Satellite System (GNSS)**

chair Stefano Gandolfi

#### **Earth Observation/Copernicus**

chairs Valerio Tramutoli and Branka Cuca



## Joint Working Group Meeting

### - agenda -

- *Closure of Space for AGRI experience (feedback from the WS event in Matera)*
- *Proposal for Action: Position Paper on Space Technologies for Cultural Heritage*
- *Possibility for SPACE KIC initiative*
- *Copernicus Academy / Copernicus Relay*
- *ERASMUS Calls*
- *Proposal for a meeting with CoR representatives or delegates of NEREUS regions*

## Proposal for Action:

### ➤ **Position paper on Space for Cultural Heritage**

by NEREUS Working Group on  
***Earth Observation/Copernicus***

Co-chairs

Prof. Valerio Tramutoli, University of Basilicata

Dr. Branka Cuca, Politecnico di Milano

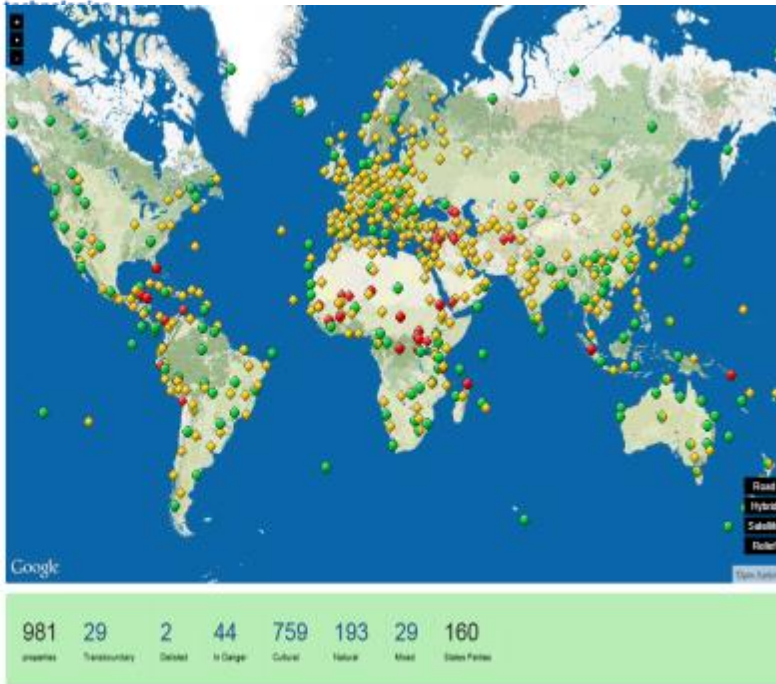
## THE LINK HAS BEEN THERE...

*Monitoring and management of built cultural heritage, oriented towards its protection and preservation increasingly rely upon the timely information deriving from space satellite imagery and their integration with other geo-spatial data/systems.*

EU POLICY FRAMEWORK that links Remote Sensing with Cultural Heritage already exists:

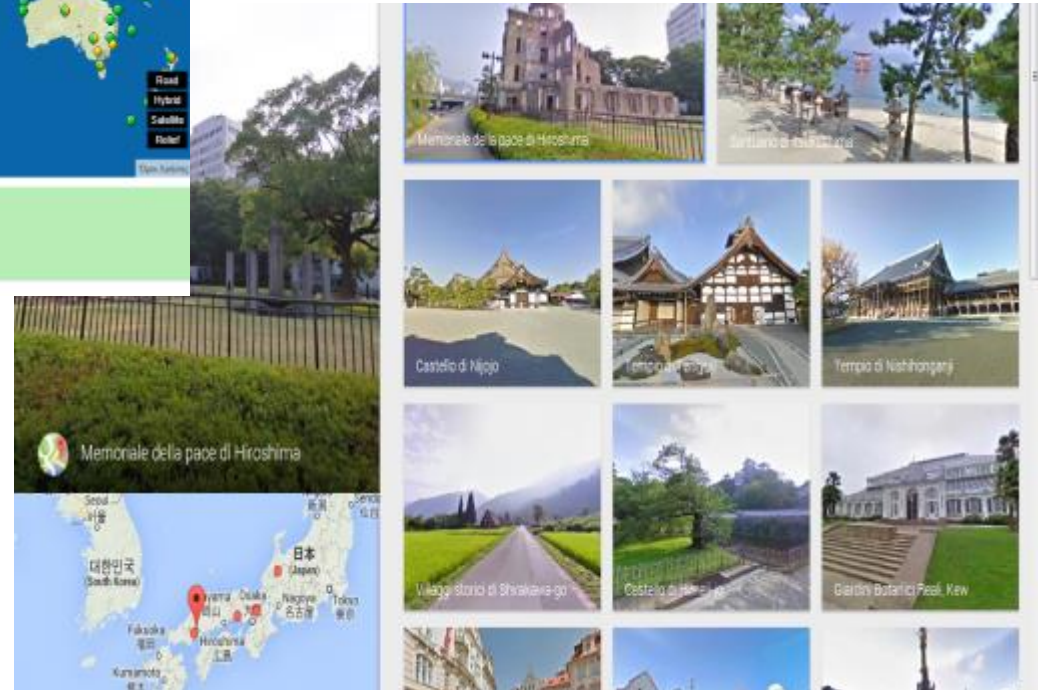
- The European Landscape Convention, 2000 underlines the necessity *‘to integrate landscape into its regional and town planning policies and in its cultural, environmental, agricultural, social and economic policies’*. (Articles 3 and 5)
- The European Convention on the Protection of the Archaeological Heritage, known as Valletta Convention, CoE 1992 stresses the importance of applying, wherever possible, *non-destructive methods of investigation* in order to “preserve the archaeological heritage and guarantee the scientific significance of archaeological research work”. (Article 3)

Google – UNESCO alliance, 2012



### Google World Wonders Project

International corporation Google formed a partnership with the UNESCO World Heritage Centre to increase awareness worldwide and encourage participation in the preservation of World Heritage sites through the.





**SOMEONE IS ALREADY ACTIVE**

NEREUS  
*Joint Working Group  
meeting*

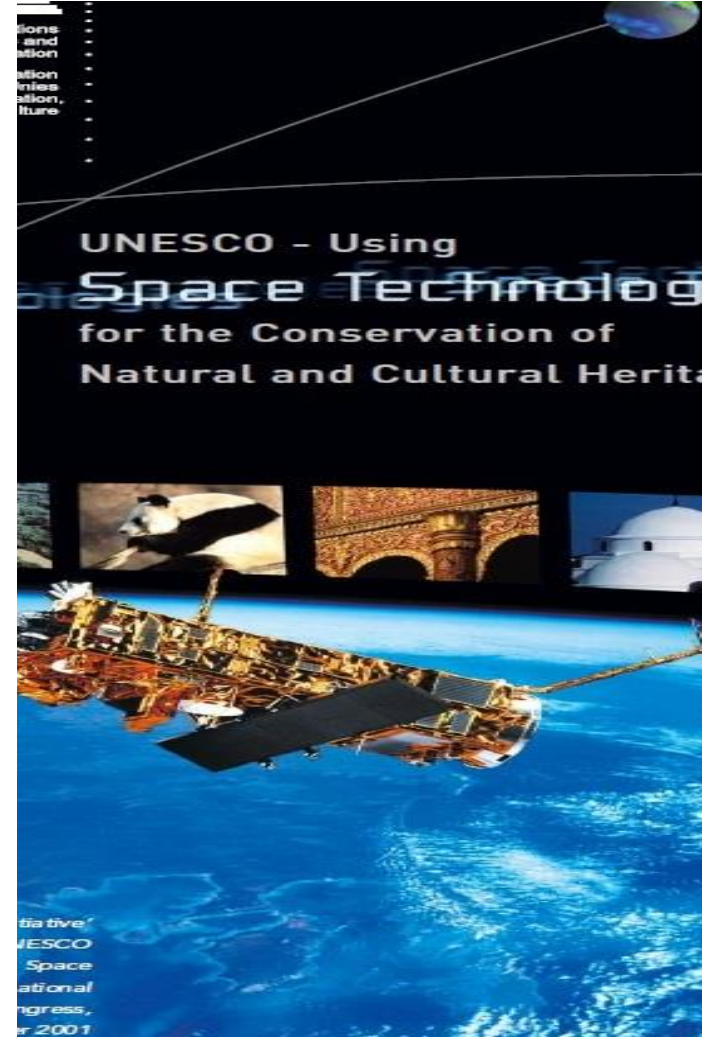
UNESCO and the European Space Agency (ESA) signed an agreement to encourage Earth observation satellites to be used to monitor cultural and natural World Heritage sites. The signing of the Agreement officially launched the

**'Open Initiative on the Use of Space Technologies to Support the World Heritage Convention'.**

*(June 18 2003 at the Paris Air Show in Le Bourget, France)*



**Unfortunately, the agreement it seems inactive since 2009**



## WHY SHOULD WE CARE?

**INSPIRE Directive:** Spatial Information in the European Community  
*“...aims to create a European Union (EU) spatial data infrastructure. This will enable the sharing of environmental spatial information among public sector organisations and better facilitate public access to spatial information across Europe. A **European Spatial Data Infrastructure** will assist in policy-making across boundaries.”*



### Annex I: **Theme 9. Protected sites**

Defined as: *“Area designated or managed within a framework of international, Community and Member States' legislation to achieve specific conservation objectives. According to IUCN and adopted for the INSPIRE context a **protected site** is: An area of land and/or sea especially dedicated to the protection and maintenance of **biological diversity**, and of **natural** and **associated cultural resources**, and managed through legal or other effective means.”*

## WHY SHOULD WE CARE?

### PSI Directive

#### The Directive on the re-use of public sector information

(Directive 2003/98/EC, known as the 'PSI Directive').

It encourages the Member States to make as much information available for re-use as possible. It addresses **material held by public sector bodies in the Member States, at national, regional and local levels**, such as ministries, state agencies, municipalities, as well as organisations funded for the most part by or under the control of public authorities (e.g. meteorological institutes).

In this context, the Regions are usually also the main authorities for Spatial Data Infrastructures and Services/Operation of Environmental Agencies →

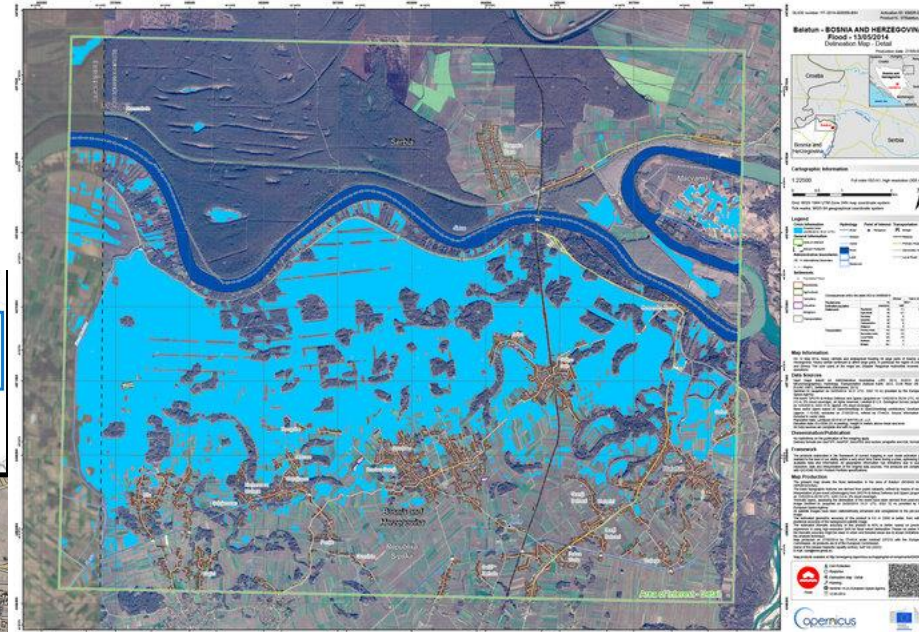
**Link with Open Government Data initiative**

**(Innovation and economic growth as one of four main OGD drivers)**





## WHY SHOULD WE CARE?



ENVIRONMENTAL DISASTER  
Thematic Map based on Sentinel-1:  
Balkan Floods (2014)

5 Oct 2015 **IS in Palmyra: an interactive map of the distruction**  
Repubblica (23 Marzo 2016)

<http://video.repubblica.it/mondo/la-furia-dell-is-su-palmira-la-mappa-interattiva-delle-distruzioni/213684/212856c>

## NEW OPPORTUNITIES IN EU

Brussels, 8.6.2016

JOINT COMMUNICATION TO THE EUROPEAN  
PARLIAMENT AND THE COUNCIL

### Towards an EU strategy for international cultural relations



HIGH REPRESENTATIVE  
OF THE UNION FOR  
FOREIGN AFFAIRS AND  
SECURITY POLICY

Brussels, 8.6.2016  
JOIN(2016) 29 final

JOINT COMMUNICATION TO THE EUROPEAN PARLIAMENT AND THE  
COUNCIL

Towards an EU strategy for international cultural relations

*“**Protect heritage:** The Commission will contribute to international efforts, led by UNESCO, to set up a rapid reaction mechanism for the protection of cultural heritage sites. The Commission will also share with UNESCO, **inter alia through the Copernicus Emergency Management Service, satellite imagery of cultural heritage sites at risk in order to evaluate damage and plan possible reconstruction.** The EU will include expertise to assess damages to cultural heritage as part of post-disaster and post-conflict recovery measures. The EU Regional Fund in Response to the Syrian Crisis will also contribute to protecting cultural heritage and promoting cultural diversity.”*

*“evaluate damage”* → MONITORING

*“plan possible reconstruction”* → MANAGEMENT

Space-based technologies can significantly contribute to  
*“assess damages to cultural heritage as part of post-disaster  
and post-conflict recovery measures”*.

We should care because of **our shared cultural values** and  
**because of the possible social, environmental and economic  
impact** on administrations of EU regions.

Working Group Action Proposal  
::: **NEREUS Position Paper**  
**on Space for Cultural Heritage** :::  
**#SPACE4CH**

The **EIT's Knowledge and Innovation Communities (KICs)** are partnerships that bring together businesses, research centres and universities. They allow:

- innovative products and services to be developed in every area imaginable, including climate change, healthy living and active ageing
- new companies to be started
- a new generation of entrepreneurs to be trained

The KICs carry out activities that cover the entire innovation chain: training and education programmes, reinforcing the journey from research to the market, innovation projects, as well as business incubators and accelerators. The EIT's role is to guide the process and set the strategies, but it's up to the KICs to put these into practice and provide results.

There are currently **five KICs and each focuses on a different societal challenge:**

- **Climate-KIC:** addressing climate change mitigation and adaptation
- **EIT Digital:** addressing Information and Communication Technologies
- **KIC InnoEnergy:** addressing sustainable energy
- **EIT Health:** addressing healthy living and active ageing
- **EIT Raw Materials:** addressing sustainable exploration, extraction, processing, recycling and substitution

## ➤ Copernicus Relay among NEREUS members

### COPERNICUS RELAYS (Approved)

- **Azores Region** (Portugal)
- **Austria**: FFG - Austrian Research Promotion Agency
- **Basilicata Region** (Italy): TeRN, the technological District of Basilicata Region for Earth Observation and Natural Risks
- **Bavaria Region** (Germany): bavAIRia (Prof. Dr. Manfred Schroeder)
- **Bretagne Region** (France): Pole Mer Bretagne Atlantique
- **Brandenburg Region** (Germany): GEOkomm and GeoForschungsZentrum (GFZ)
- **East Midlands** (UK): East Midlands Satellite Applications Centre of Excellence (EMBRACE) in coalition with the UK National Centre for Earth Observation (NCEO)
- **Occitania Region** (France): CNES and Cerema (the Centre For Studies and Expertise on Risks, Environment, Mobility, and Spatial planning)
- **PACA Region** (France): BOOSTER PACA (under the SAFE Cluster)
- **Walloon Region** (Belgium): consortium of ISSeP/Skywin/Spacebel

➔ **SpaceTec Partners SPRL** (under EC/GROW contract) will be running the Support Office responsible to animate and support the Relays and Academy networks.



## ➤ Copernicus Academy among NEREUS members

NEREUS  
*Joint Working Group  
meeting*

### **COPERNICUS ACADEMY (Awaiting the award)**

- **Azores Region:** (Portugal): University of the Azores
- **Basilicata Region** (Italy): Univeristy of Basilicata
- **Bretagne Region** (France): Groupement d'Intérêt Scientifique Bretagne Télédétection (GIS BreTel)
- **Bruxelles Region** (Belgium): Université Libre de Bruxelles
- **Lombardy Region** (Italy): Politecnico di Milano
- **Madrid Region** (Spain): Colegio Oficial de Ingenieros de Telecomunicación (COIT)

**\*\*\* IMPORTANT:** A member of NEREUS **SpaceTec Partners SPRL** (under EC/GROW contract) will be running the Support Office responsible to animate and support the Relays and Academy networks.

- **Erasmus Mundus Joint Master Degrees (EAC/A03/2016)** - 40 Master High Degree delivered by an international consortium of higher education institutions (HEIs) and non-academic partners 3 partners min participating in Erasmus Plus financed at 95%. **DEADLINE 16/02/2017 - 12:00.**

*The specificity of these joint degrees lies in their high degree of "jointness" and integration and the excellent academic content and methodology that they offer*

- **Erasmus Knowledge Alliance (EAC/A03/2016).** Partnership aimed at tackling skills gaps, by identifying sector-specific labour market needs and demand for new skills with regard to one or more occupational profiles. Financed at 80%. **DEADLINE 28/02/2017 - 12:00.**

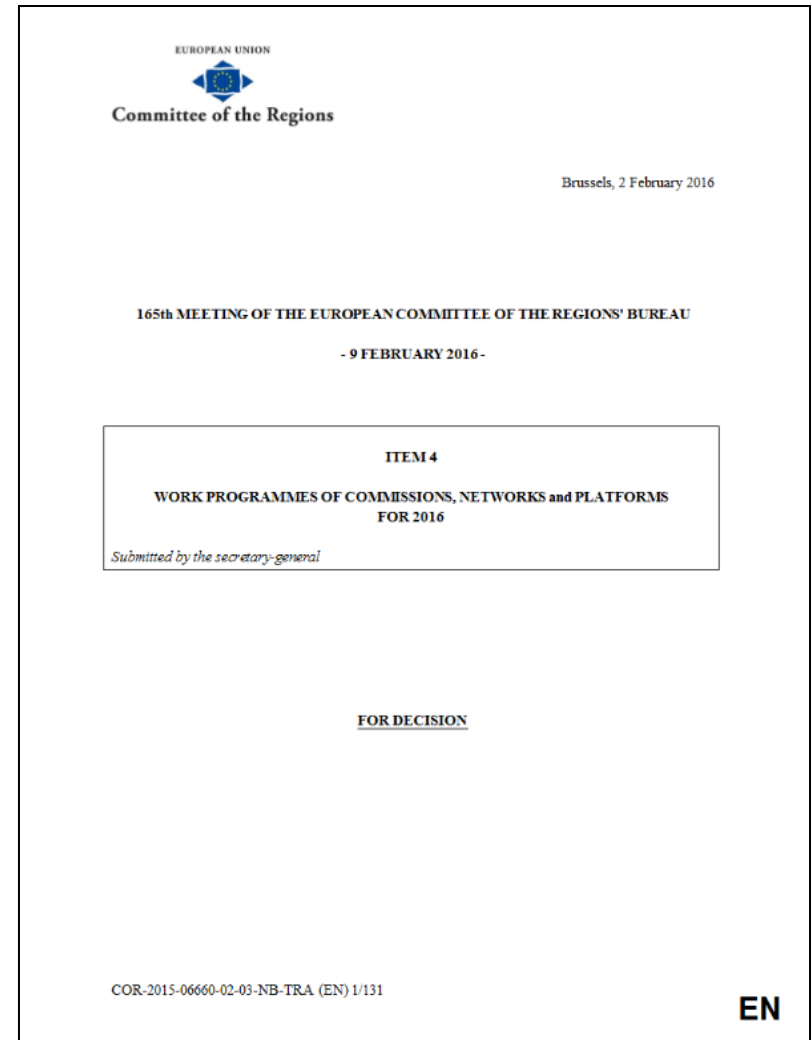
## ➤ Proposal for a meeting with CoR representatives/delegates of NEREUS regions

Thanks to Valerio Tramutoli, NEREUS network and regional dimension has been mentioned in CoR of Working Programme 2016.


Are you in touch with representatives/delegates from your Region at **Committee of the Regions?**

GET IN TOUCH!

→ All members invited to get in touch with representatives of their regions or to communicate the contact they have to **the Secretariat. (tbc with Roya&Ilaria?)**



EUROPEAN UNION



Committee of the Regions

Brussels, 2 February 2016

165th MEETING OF THE EUROPEAN COMMITTEE OF THE REGIONS' BUREAU

- 9 FEBRUARY 2016 -

ITEM 4

WORK PROGRAMMES OF COMMISSIONS, NETWORKS and PLATFORMS  
FOR 2016

*Submitted by the secretary-general*

FOR DECISION

COR-2015-06660-02-03-NB-TRA (EN) 1/131

EN





**THANK YOU!**